

Netminer, Tool Monitoring Jaringan

Endi Dwi Kristianto

endidwikristianto@engineer.com

http://endidwikristianto.blogspot.com

Lisensi Dokumen:

Copyright © 2012-2013 IlmuKomputer.Com

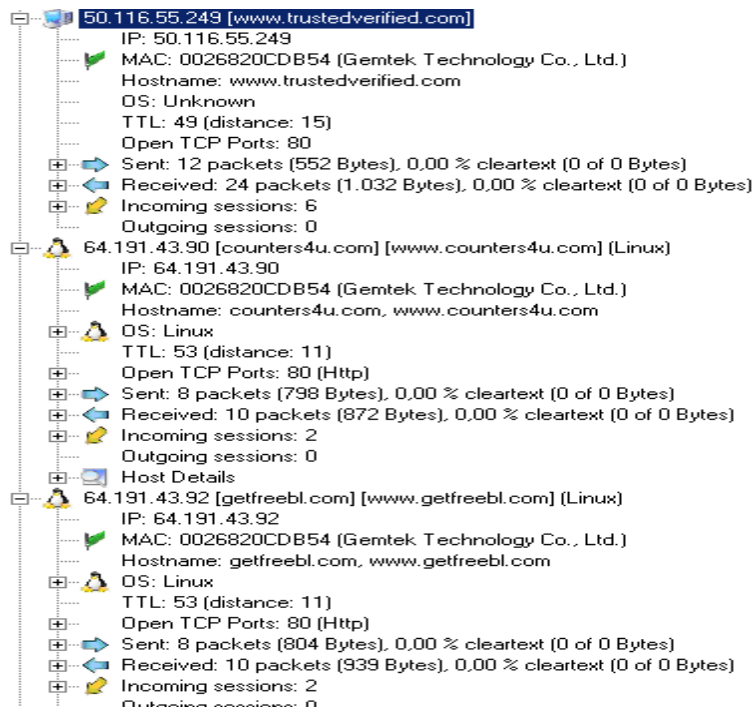
Seluruh dokumen di IlmuKomputer.Com dapat digunakan, dimodifikasi dan disebarluaskan secara bebas untuk tujuan bukan komersial (nonprofit), dengan syarat tidak menghapus atau merubah atribut penulis dan pernyataan copyright yang disertakan dalam setiap dokumen. Tidak diperbolehkan melakukan penulisan ulang, kecuali mendapatkan ijin terlebih dahulu dari IlmuKomputer.Com.

Pendahuluan

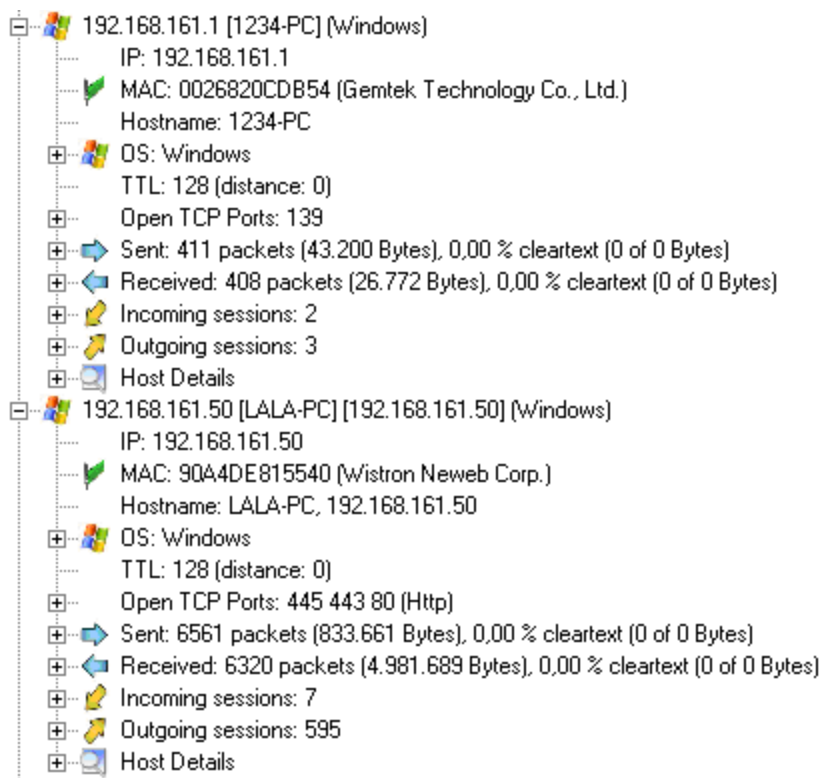
NetworkMiner Packet Analyzer adalah suatu alat yang dapat menganalisis jaringan (Network Forensic Analysis Tool) atau biasa disingkat NFAT untuk system operasi windows. NetworkMiner dapat di gunakan sebagai alat sniffer atau alat untuk menangkap data-data paket dalam hal ini untuk mendeteksi sistem operasi, sesi, nama Host, port yang terbuka(open Ports), dan lain-lain tanpa membebani sedikitpun traffic pada jaringan. NetworkMiner juga dapat mengurai file PCAP untuk di analisis secara off-line. Untuk dapat menggunakan NetworkMiner pertama-tama yang harus kita lakukan adalah mengunduh aplikasi NetworkMiner pada situs di bawah ini.

<http://sourceforge.net/projects/networkminer/?source=directory>.

File yang telah didownload berbentuk zip, maka tinggal kita buka dan jalankan salah satu file yang berekstensi .exe tanpa perlu melakukan instalasi. Setelah memilih wireless adapter, akan muncul tampilan berupa host-host dalam jaringan seperti di bawah ini.



Jumlah host akan bertambah terus sampai proses scanning selesai dilakukan. Apabila pencarian host telah selesai dilakukan, maka kita dapat melihat alamat IP, nama host, alamat MAC, OS, TTL, Open TCP ports, sent packet, received packet, incoming dan outgoing packet dari masing-masing host.



Setelah itu kita dapat melihat daftar frame yang dikirim atau diterima oleh host-host

dalam jaringan. Jika kita klik pada salah satu frame maka akan muncul alamat MAC dari pengirim dan penerima frame.

```
[-] Frame 1 [22/10/2012 15:20:26]
[-] Frame 2 [22/10/2012 15:20:29]
[-] Frame 3 [22/10/2012 15:20:32]
[-] Frame 4 [22/10/2012 15:20:35]
[-] Frame 5 [22/10/2012 15:20:38]
[-] Frame 6 [22/10/2012 15:20:39]
[-] Frame 7 [22/10/2012 15:20:39]
[-] Frame 8 [22/10/2012 15:20:43]
[-] Frame 9 [22/10/2012 15:20:43]
[-] Frame 10 [22/10/2012 15:20:48]
[-] Frame 11 [22/10/2012 15:20:49]
[-] Frame 12 [22/10/2012 15:20:49]
[-] Frame 13 [22/10/2012 15:20:51]
[-] Frame 14 [22/10/2012 15:20:51]
[-] Frame 15 [22/10/2012 15:20:51]
[-] Frame 16 [22/10/2012 15:20:52]
[-] Frame 17 [22/10/2012 15:20:52]
[-] Frame 18 [22/10/2012 15:20:52]
[-] Frame 19 [22/10/2012 15:20:52]
[-] Frame 20 [22/10/2012 15:20:52]
[-] Frame 21 [22/10/2012 15:20:52]
[-] Frame 22 [22/10/2012 15:20:52]
[-] Frame 23 [22/10/2012 15:20:52]
[-] Frame 24 [22/10/2012 15:20:52]
[-] Frame 25 [22/10/2012 15:20:52]
[-] Frame 26 [22/10/2012 15:20:52]
[-] Frame 27 [22/10/2012 15:20:52]
[-] Frame 28 [22/10/2012 15:20:52]
[-] Frame 29 [22/10/2012 15:20:52]
[-] Frame 30 [22/10/2012 15:20:52]
[-] Frame 31 [22/10/2012 15:20:52]
[-] Frame 32 [22/10/2012 15:20:52]
[-] Frame 33 [22/10/2012 15:20:52]
[-] Frame 34 [22/10/2012 15:20:52]
```

NetworMiner juga dapat menunjukkan sesi yang terjadi dalam suatu jaringan beserta informasi yang cukup lengkap. Daftar setiap sesi yang terjadi bisa ditemukan pada tab 'Session'. Pada bagian ini kita dapat melihat frame apa yang diterima oleh tiap host beserta servernya, port-port yang digunakan untuk proses pengiriman dan penerimaan frame, juga waktu pengirimannya. Kita bisa mencocokkan informasi pada menu 'session' ini dengan informasi pada menu 'frame'. Contohnya pada gambar di bawah terlihat bahwa LALA-PC (192.168.161.50) mengakses frame nomor 205 dengan server plus.google.com (173.194.38.163). Kita dapat mencoba mencari frame 205 pada frame list dan mencocokkan pengirim dan penerimanya.

Hosts (314)	Frames (12xxx)	Files (627)	Images (355)	Messages	Credentials (117)	Sessions (814)	DNS (846)	Parameters (5768)	Keywords	Cleartext	Anomalies
Frame nr.	Client host	C. port	Server host	S. port	Protocol (application layer)	Start time					
205	192.168.161.50 [LALA-PC] (Windows)	3307	173.194.38.163 [plus.google.com]	443	Ssl	22/10/2012 15:21:00					
554	192.168.161.50 [LALA-PC] (Windows)	3266	69.171.237.16	80	Http	22/10/2012 15:21:10					
563	192.168.161.50 [LALA-PC] (Windows)	3310	118.98.42.114 [a1725.dspl.akamai.net] [p...	80	Http	22/10/2012 15:21:11					
564	192.168.161.50 [LALA-PC] (Windows)	3311	118.98.42.114 [a1725.dspl.akamai.net] [p...	80	Http	22/10/2012 15:21:11					
707	192.168.161.50 [LALA-PC] (Windows)	3283	69.171.234.23	80		22/10/2012 15:21:17					
778	192.168.161.50 [LALA-PC] (Windows)	3316	74.125.228.79 [csi.gstatic.com]	443	Ssl	22/10/2012 15:21:24					
781	192.168.161.50 [LALA-PC] (Windows)	3317	74.125.228.79 [csi.gstatic.com]	443		22/10/2012 15:21:24					
802	192.168.161.50 [LALA-PC] (Windows)	3318	10.10.40.207 [Windows]	135		22/10/2012 15:21:26					
831	192.168.161.50 [LALA-PC] (Windows)	3321	118.98.42.114 [a1725.dspl.akamai.net] [p...	80	Http	22/10/2012 15:21:33					
832	192.168.161.50 [LALA-PC] (Windows)	3322	118.98.42.114 [a1725.dspl.akamai.net] [p...	80	Http	22/10/2012 15:21:33					
1041	192.168.161.50 [LALA-PC] (Windows)	3339	184.50.106.239 [e2665.cc.akamaiedge.n...	80	Http	22/10/2012 15:23:00					
1045	192.168.161.50 [LALA-PC] (Windows)	3340	184.50.106.239 [e2665.cc.akamaiedge.n...	80		22/10/2012 15:23:00					
1329	192.168.161.50 [LALA-PC] (Windows)	3350	10.10.40.207 [Windows]	135		22/10/2012 15:23:56					
1297	192.168.161.50 [LALA-PC] (Windows)	3348	192.168.161.1 [1234-PC] (Windows)	139		22/10/2012 15:23:55					
1311	192.168.161.50 [LALA-PC] (Windows)	3349	192.168.161.1 [1234-PC] (Windows)	139		22/10/2012 15:23:55					
1392	192.168.161.50 [LALA-PC] (Windows)	3359	118.98.42.114 [a1725.dspl.akamai.net] [p...	80	Http	22/10/2012 15:24:29					
1514	192.168.161.50 [LALA-PC] (Windows)	3368	69.171.229.16 [www.facebook.com]	80	Http	22/10/2012 15:25:11					
1522	192.168.161.50 [LALA-PC] (Windows)	3369	69.171.229.16 [www.facebook.com]	80		22/10/2012 15:25:12					
1771	192.168.161.50 [LALA-PC] (Windows)	3380	173.194.38.166 [plus.google.com] [sugge...	80	Http	22/10/2012 15:26:17					
1787	192.168.161.50 [LALA-PC] (Windows)	3381	173.194.38.166 [plus.google.com] [sugge...	80	Http	22/10/2012 15:26:20					
1801	192.168.161.50 [LALA-PC] (Windows)	3383	173.194.38.174 [plus.google.com] [sugge...	443	Ssl	22/10/2012 15:26:21					
1821	192.168.161.50 [LALA-PC] (Windows)	3384	173.194.38.166 [plus.google.com] [sugge...	80	Http	22/10/2012 15:26:23					
1835	192.168.161.50 [LALA-PC] (Windows)	3385	173.194.38.166 [plus.google.com] [sugge...	80	Http	22/10/2012 15:26:23					
1853	192.168.161.50 [LALA-PC] (Windows)	3387	173.194.38.180 [www.google.com]	80	Http	22/10/2012 15:26:25					
1861	192.168.161.50 [LALA-PC] (Windows)	3388	173.194.38.191 [www.google.co.id]	80	Http	22/10/2012 15:26:26					
1868	192.168.161.50 [LALA-PC] (Windows)	3389	173.194.38.191 [www.google.co.id]	443	Ssl	22/10/2012 15:26:26					
1840	192.168.161.50 [LALA-PC] (Windows)	3386	173.194.38.166 [plus.google.com] [sugge...	80		22/10/2012 15:26:23					
2072	192.168.161.50 [LALA-PC] (Windows)	3391	173.194.38.184 [www.google.co.id] [clien...	443	Ssl	22/10/2012 15:26:32					
2134	192.168.161.50 [LALA-PC] (Windows)	3393	118.98.42.82 [a1725.dspl.akamai.net] [pr...	80	Http	22/10/2012 15:26:34					
2284	192.168.161.50 [LALA-PC] (Windows)	3397	173.194.38.170 [blogspot.l.google.com] [...	80	Http	22/10/2012 15:26:59					
2293	192.168.161.50 [LALA-PC] (Windows)	3399	173.194.38.170 [blogspot.l.google.com] [...	80	Http	22/10/2012 15:27:00					
2306	192.168.161.50 [LALA-PC] (Windows)	3400	74.125.128.191 [blogger.l.google.com] [w...	80	Http	22/10/2012 15:27:01					
2308	192.168.161.50 [LALA-PC] (Windows)	3401	74.125.31.95 [googleapis.l.google.com] [...	80	Http	22/10/2012 15:27:01					
2326	192.168.161.50 [LALA-PC] (Windows)	3402	173.194.38.164 [plus.google.com] [sunne...	443	Ssl	22/10/2012 15:27:01					

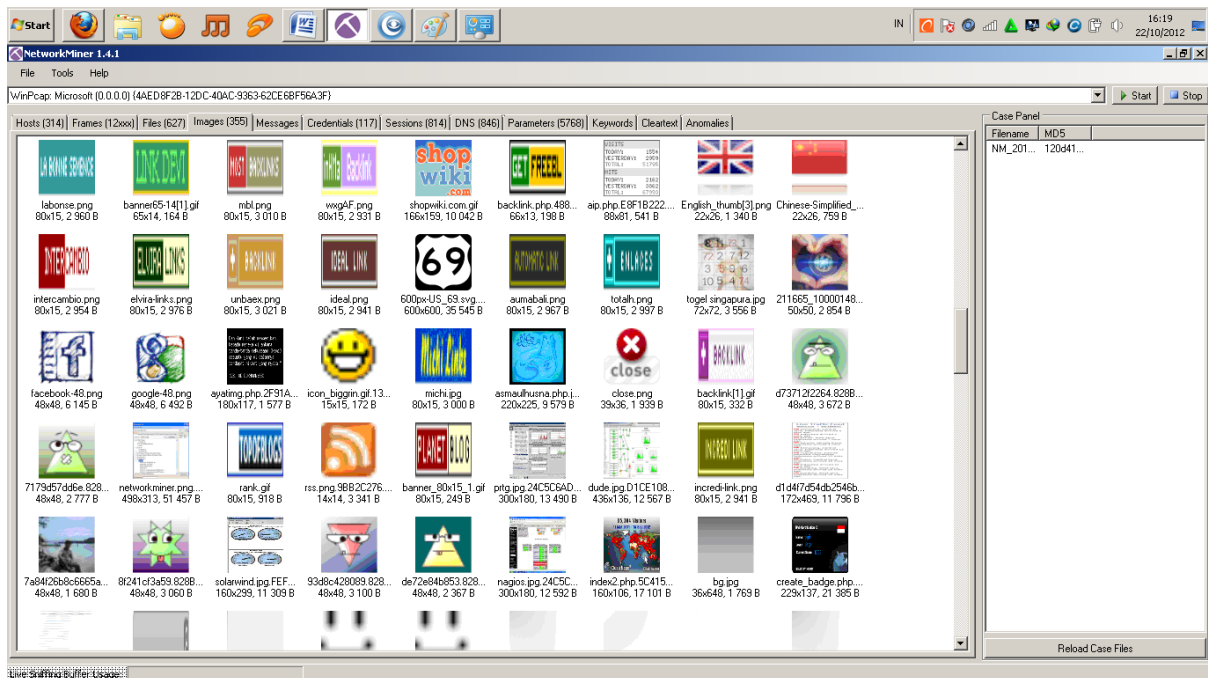
Setelah itu kita dapat melihat data-data dari setiap akses yang di batasi atau yang di kenal dengan credential. Kita dapat mengetahui data-data tersebut pada bagian tab dengan nama 'Credentials'.

Client	Server	Protocol	Username	Password	Valid login	Login timestamp
192.168.161.50 [LALA-PC] [192.168.161.50] (Windows)	69.171.235.16 [3-pct.channel.facebook.com]	HTTP Cookie	datr=Kmo3UDGabsXNk...	N/A	Unknown	22/10/2012 15:27:59
192.168.161.50 [LALA-PC] [192.168.161.50] (Windows)	173.194.38.172 [blogspot.1.google.com] [5kdcy63r.blo...	HTTP Cookie	_em_vt=5de6e75101d8...	N/A	Unknown	22/10/2012 15:28:29
192.168.161.50 [LALA-PC] [192.168.161.50] (Windows)	173.194.38.168 [plus.google.com] [suggestqueries.l.g...	HTTP Cookie	NID=64=ZiS-zlKMBz...	N/A	Unknown	22/10/2012 15:28:35
192.168.161.50 [LALA-PC] [192.168.161.50] (Windows)	125.160.18.84 [a335.b.akamai.net] [w.sharethis.com...	HTTP Cookie	__stid=CqTZFA8j1Yw...	N/A	Unknown	22/10/2012 15:28:35
192.168.161.50 [LALA-PC] [192.168.161.50] (Windows)	69.171.229.16 [www.facebook.com]	HTTP Cookie	datr=Kmo3UDGabsXNk...	N/A	Unknown	22/10/2012 15:28:38
192.168.161.50 [LALA-PC] [192.168.161.50] (Windows)	202.47.88.77 [iqroit.com]	HTTP Cookie	__utma=203077001.17...	N/A	Unknown	22/10/2012 15:28:39
192.168.161.50 [LALA-PC] [192.168.161.50] (Windows)	69.171.235.16 [3-pct.channel.facebook.com]	HTTP Cookie	datr=Kmo3UDGabsXNk...	N/A	Unknown	22/10/2012 15:28:40
192.168.161.50 [LALA-PC] [192.168.161.50] (Windows)	69.171.235.16 [3-pct.channel.facebook.com]	HTTP Cookie	datr=Kmo3UDGabsXNk...	N/A	Unknown	22/10/2012 15:28:40
192.168.161.50 [LALA-PC] [192.168.161.50] (Windows)	69.171.229.16 [www.facebook.com]	HTTP Cookie	datr=Kmo3UDGabsXNk...	N/A	Unknown	22/10/2012 15:29:03
192.168.161.50 [LALA-PC] [192.168.161.50] (Windows)	118.215.111.144 [e3826.g.akamaiedge.net] [ssl2.twit...	HTTP Cookie	guest_id="v1:13466639...	N/A	Unknown	22/10/2012 15:29:03
192.168.161.50 [LALA-PC] [192.168.161.50] (Windows)	118.98.42.114 [a1725.dspl.akamai.net] [profile.ak.face...	HTTP Cookie	__stid=CqTZFA8j1Yw...	N/A	Unknown	22/10/2012 15:29:03
192.168.161.50 [LALA-PC] [192.168.161.50] (Windows)	204.236.130.200 [l.p.sharethis.com.akadns.net] [l shar...	HTTP Cookie	__stid=CqTZFA8j1Yw...	N/A	Unknown	22/10/2012 15:29:03
192.168.161.50 [LALA-PC] [192.168.161.50] (Windows)	204.236.131.42 [seg.p.sharethis.com.akadns.net] [se...	HTTP Cookie	__stid=CqTZFA8j1Yw...	N/A	Unknown	22/10/2012 15:29:03
192.168.161.50 [LALA-PC] [192.168.161.50] (Windows)	118.98.42.82 [a1725.dspl.akamai.net] [profile.ak.face...	HTTP Cookie	__stid=CqTZFA8j1Yw...	N/A	Unknown	22/10/2012 15:29:03
192.168.161.50 [LALA-PC] [192.168.161.50] (Windows)	184.169.138.255 [wd.p.sharethis.com.akadns.net] [w...	HTTP Cookie	__stid=CqTZFA8j1Yw...	N/A	Unknown	22/10/2012 15:29:03
192.168.161.50 [LALA-PC] [192.168.161.50] (Windows)	118.98.42.82 [a1725.dspl.akamai.net] [profile.ak.face...	HTTP Cookie	__stid=CqTZFA8j1Yw...	N/A	Unknown	22/10/2012 15:29:04
192.168.161.50 [LALA-PC] [192.168.161.50] (Windows)	125.160.18.84 [a335.b.akamai.net] [w.sharethis.com...	HTTP Cookie	__stid=CqTZFA8j1Yw...	N/A	Unknown	22/10/2012 15:29:06
192.168.161.50 [LALA-PC] [192.168.161.50] (Windows)	173.194.38.165 [plus.google.com] [suggestqueries.l.g...	HTTP Cookie	_em_vt=5de6e75101d8...	N/A	Unknown	22/10/2012 15:29:07
192.168.161.50 [LALA-PC] [192.168.161.50] (Windows)	69.171.229.16 [www.facebook.com]	HTTP Cookie	datr=Kmo3UDGabsXNk...	N/A	Unknown	22/10/2012 15:29:11
192.168.161.50 [LALA-PC] [192.168.161.50] (Windows)	69.171.235.16 [3-pct.channel.facebook.com]	HTTP Cookie	datr=Kmo3UDGabsXNk...	N/A	Unknown	22/10/2012 15:29:14
192.168.161.50 [LALA-PC] [192.168.161.50] (Windows)	173.194.38.160 [plus.google.com] [suggestqueries.l.g...	HTTP Cookie	NID=64=ZiS-zlKMBz...	N/A	Unknown	22/10/2012 15:29:16
192.168.161.50 [LALA-PC] [192.168.161.50] (Windows)	173.194.38.167 [plus.google.com] [suggestqueries.l.g...	HTTP Cookie	NID=64=ZiS-zlKMBz...	N/A	Unknown	22/10/2012 15:29:17
192.168.161.50 [LALA-PC] [192.168.161.50] (Windows)	69.171.235.16 [3-pct.channel.facebook.com]	HTTP Cookie	datr=Kmo3UDGabsXNk...	N/A	Unknown	22/10/2012 15:29:21
192.168.161.50 [LALA-PC] [192.168.161.50] (Windows)	69.171.235.16 [3-pct.channel.facebook.com]	HTTP Cookie	datr=Kmo3UDGabsXNk...	N/A	Unknown	22/10/2012 15:29:21
192.168.161.50 [LALA-PC] [192.168.161.50] (Windows)	69.171.229.16 [www.facebook.com]	HTTP Cookie	datr=Kmo3UDGabsXNk...	N/A	Unknown	22/10/2012 15:29:21
192.168.161.50 [LALA-PC] [192.168.161.50] (Windows)	69.171.235.16 [3-pct.channel.facebook.com]	HTTP Cookie	datr=Kmo3UDGabsXNk...	N/A	Unknown	22/10/2012 15:29:27
192.168.161.50 [LALA-PC] [192.168.161.50] (Windows)	69.171.235.16 [3-pct.channel.facebook.com]	HTTP Cookie	datr=Kmo3UDGabsXNk...	N/A	Unknown	22/10/2012 15:29:34
192.168.161.50 [LALA-PC] [192.168.161.50] (Windows)	69.171.235.16 [3-pct.channel.facebook.com]	HTTP Cookie	datr=Kmo3UDGabsXNk...	N/A	Unknown	22/10/2012 15:29:40
192.168.161.50 [LALA-PC] [192.168.161.50] (Windows)	69.171.237.36 [star.facebook.com] [pixel.facebook.co...	HTTP Cookie	datr=Kmo3UDGabsXNk...	N/A	Unknown	22/10/2012 15:29:41
192.168.161.50 [LALA-PC] [192.168.161.50] (Windows)	69.171.235.16 [3-pct.channel.facebook.com]	HTTP Cookie	datr=Kmo3UDGabsXNk...	N/A	Unknown	22/10/2012 15:30:21
192.168.161.50 [LALA-PC] [192.168.161.50] (Windows)	69.171.235.16 [3-pct.channel.facebook.com]	HTTP Cookie	datr=Kmo3UDGabsXNk...	N/A	Unknown	22/10/2012 15:30:28

Pada bagian files, kita bisa melihat file yang dibuka oleh host-host di jaringan. Bisa berupa file yang include di dalam halaman website yang diakses oleh host.

Frame nr.	Recons...	Source ...	S. port	Destinat...	D. port	Protocol	Filename				
3052	C:\User...	74.125...	TCP 80	192.168...	TCP 3442	HttpGet...	black50.png				
3045	C:\User...	74.125...	TCP 80	192.168...	TCP 3400	HttpGet...	comment-iframe.g6AD96CFD.html				
3072	C:\User...	74.125...	TCP 80	192.168...	TCP 3443	HttpGet...	logo-16.png				
3077	C:\User...	74.125...	TCP 80	192.168...	TCP 3444	HttpGet...	navbar.gA28A60E5.html				
3117	C:\User...	173.194...	TCP 80	192.168...	TCP 3446	HttpGet...	1ZIDaTC71ZxPmWV2.js:javascript				
3128	C:\User...	74.125...	TCP 80	192.168...	TCP 3445	HttpGet...	blank.gif				
3141	C:\User...	74.125...	TCP 80	192.168...	TCP 3447	HttpGet...	close.gif				
3189	C:\User...	74.125...	TCP 80	192.168...	TCP 3448	HttpGet...	icons_peach.png				
3192	C:\User...	74.125...	TCP 80	192.168...	TCP 3449	HttpGet...	arrows-light.png				
3100	C:\User...	74.125...	TCP 80	192.168...	TCP 3400	HttpGet...	4124270156-cmftp.css				
3046	C:\User...	173.194...	TCP 80	192.168...	TCP 3387	HttpGet...	friendconnect.js:javascript				
3331	C:\User...	173.194...	TCP 80	192.168...	TCP 3397	HttpGet...	stats.EDCC901D.html				
3346	C:\User...	173.194...	TCP 80	192.168...	TCP 3450	HttpGet...	ifr.92CC897.html				
3385	C:\User...	74.125...	TCP 80	192.168...	TCP 3453	HttpGet...	chart.B789A220.png				
2776	C:\User...	67.23.2...	TCP 80	192.168...	TCP 3419	HttpGet...	xc1.png				
3414	C:\User...	173.194...	TCP 80	192.168...	TCP 3388	HttpGet...	uL.A3D83B4C.html				
3101	C:\User...	74.125...	TCP 80	192.168...	TCP 3443	HttpGet...	3716925747-cmt.js:javascript				
3377	C:\User...	173.194...	TCP 80	192.168...	TCP 3450	HttpGet...	ifr.A249FC42.html				
3514	C:\User...	173.194...	TCP 80	192.168...	TCP 3446	HttpGet...	trash.gif				
3562	C:\User...	173.194...	TCP 80	192.168...	TCP 3457	HttpGet...	__utm.gif.8283A78B.gif	jpg	461 B	22/10/...	www.google.com/friendconnec
3559	C:\User...	173.194...	TCP 80	192.168...	TCP 3446	HttpGet...	plus.gif	png	1 589 B	22/10/...	www.google.com/friendconnec
3568	C:\User...	173.194...	TCP 80	192.168...	TCP 3458	HttpGet...	smallEnvelope.jpg	gif	78 B	22/10/...	www.google.com/friendconnec
3574	C:\User...	173.194...	TCP 80	192.168...	TCP 3459	HttpGet...	fc-edit.png				
3576	C:\User...	173.194...	TCP 80	192.168...	TCP 3460	HttpGet...	do-not-enter.gif				

Selain itu kita juga bisa melihat gambar-gambar yang dibuka dengan klik menu 'image'.



NetworkMiner juga dapat menampilkan data-data mengenai parameter-parameter pada suatu jaringan. Data parameter yang ditampilkan berupa nama parameter itu sendiri, parameter value, frame number, source host, source port, timestamp, dan details.

Parameter name	Parameter value	Frame number	Source host	Source p...	Destination host	Destination port	Timestamp	Details
fr	07yH8Edbggc...	14	192.168.1...	TCP 3009	69.171.235.16 ...	TCP 80	22/10/2012 15:20:51	HTTP Cookie
lu	TgBS-0d5nSb...	14	192.168.1...	TCP 3009	69.171.235.16 ...	TCP 80	22/10/2012 15:20:51	HTTP Cookie
locale	en_US	14	192.168.1...	TCP 3009	69.171.235.16 ...	TCP 80	22/10/2012 15:20:51	HTTP Cookie
c_user	1297959026	14	192.168.1...	TCP 3009	69.171.235.16 ...	TCP 80	22/10/2012 15:20:51	HTTP Cookie
xs	3%3AGd-C-djF...	14	192.168.1...	TCP 3009	69.171.235.16 ...	TCP 80	22/10/2012 15:20:51	HTTP Cookie
act	13508936047...	14	192.168.1...	TCP 3009	69.171.235.16 ...	TCP 80	22/10/2012 15:20:51	HTTP Cookie
sub	16777216	14	192.168.1...	TCP 3009	69.171.235.16 ...	TCP 80	22/10/2012 15:20:51	HTTP Cookie
p	36	14	192.168.1...	TCP 3009	69.171.235.16 ...	TCP 80	22/10/2012 15:20:51	HTTP Cookie
presence	EM350894010...	14	192.168.1...	TCP 3009	69.171.235.16 ...	TCP 80	22/10/2012 15:20:51	HTTP Cookie
Host	3-pct.channel...	14	192.168.1...	TCP 3009	69.171.235.16 ...	TCP 80	22/10/2012 15:20:51	HTTP Header
User-Agent	Mozilla/5.0 (w...	14	192.168.1...	TCP 3009	69.171.235.16 ...	TCP 80	22/10/2012 15:20:51	HTTP Header
Referer	http://www.fa...	14	192.168.1...	TCP 3009	69.171.235.16 ...	TCP 80	22/10/2012 15:20:51	HTTP Header
Origin	http://www.fa...	14	192.168.1...	TCP 3009	69.171.235.16 ...	TCP 80	22/10/2012 15:20:51	HTTP Header
Cookie	datr=Kmo3UD...	14	192.168.1...	TCP 3009	69.171.235.16 ...	TCP 80	22/10/2012 15:20:51	HTTP Header
channel	p_1297959026	14	192.168.1...	TCP 3009	69.171.235.16 ...	TCP 80	22/10/2012 15:20:51	HTTP QueryString
seq	66	14	192.168.1...	TCP 3009	69.171.235.16 ...	TCP 80	22/10/2012 15:20:51	HTTP QueryString
partition	36	14	192.168.1...	TCP 3009	69.171.235.16 ...	TCP 80	22/10/2012 15:20:51	HTTP QueryString
clientid	135efc8d	14	192.168.1...	TCP 3009	69.171.235.16 ...	TCP 80	22/10/2012 15:20:51	HTTP QueryString
cb	9wya	14	192.168.1...	TCP 3009	69.171.235.16 ...	TCP 80	22/10/2012 15:20:51	HTTP QueryString
idle	349	14	192.168.1...	TCP 3009	69.171.235.16 ...	TCP 80	22/10/2012 15:20:51	HTTP QueryString
datr	Kmo3UDGAbS...	554	192.168.1...	TCP 3266	69.171.237.16 ...	TCP 80	22/10/2012 15:21:10	HTTP Cookie
fr	07yH8Edbggc...	554	192.168.1...	TCP 3266	69.171.237.16 ...	TCP 80	22/10/2012 15:21:10	HTTP Cookie
lu	TgBS-0d5nSb...	554	192.168.1...	TCP 3266	69.171.237.16 ...	TCP 80	22/10/2012 15:21:10	HTTP Cookie
locale	en_US	554	192.168.1...	TCP 3266	69.171.237.16 ...	TCP 80	22/10/2012 15:21:10	HTTP Cookie
c_user	1297959026	554	192.168.1...	TCP 3266	69.171.237.16 ...	TCP 80	22/10/2012 15:21:10	HTTP Cookie
xs	3%3AGd-C-djF...	554	192.168.1...	TCP 3266	69.171.237.16 ...	TCP 80	22/10/2012 15:21:10	HTTP Cookie
act	13508936047...	554	192.168.1...	TCP 3266	69.171.237.16 ...	TCP 80	22/10/2012 15:21:10	HTTP Cookie
sub	16777216	554	192.168.1...	TCP 3266	69.171.237.16 ...	TCP 80	22/10/2012 15:21:10	HTTP Cookie
p	36	554	192.168.1...	TCP 3266	69.171.237.16 ...	TCP 80	22/10/2012 15:21:10	HTTP Cookie
presence	EM350894051...	554	192.168.1...	TCP 3266	69.171.237.16 ...	TCP 80	22/10/2012 15:21:10	HTTP Cookie
Host	www.faceboo...	554	192.168.1...	TCP 3266	69.171.237.16 ...	TCP 80	22/10/2012 15:21:10	HTTP Header
User-Agent	Mozilla/5.0 (w...	554	192.168.1...	TCP 3266	69.171.237.16 ...	TCP 80	22/10/2012 15:21:10	HTTP Header
X-SVN-Rev	652946	554	192.168.1...	TCP 3266	69.171.237.16 ...	TCP 80	22/10/2012 15:21:10	HTTP Header

Biografi Penulis



Endi Dwi Kristianto. Biasa dipanggil Endi. Penulis lahir di Tegal, 28 Oktober 1991. Menyelesaikan pendidikan vokasi di SMK Telkom Sandhy Putra Purwokerto Jurusan Teknik Komputer Jaringan, dan sekarang masih terdaftar sebagai mahasiswa tingkat akhir Politeknik Negeri Semarang, Program Studi D4 Teknik Telekomunikasi. Bidang kesukaan adalah Networking, Komunikasi data, Linux, WLAN, Security Network, dan Jaringan Powerline atau PLC (lagi belajar). Kegiatan saat ini adalah melakukan penelitian tentang virtual access point dan implementasi thin client (diskless) pada jaringan powerline.