

# Instalasi Windows XP SP 2 di Oracle VM Ware

**Ika Nur Khana**

*Ikanur.khana@yahoo.co.id*

*http://ikha-khana.blogspot.com*

## **Lisensi Dokumen:**

*Copyright © 2003-2007 IlmuKomputer.Com*

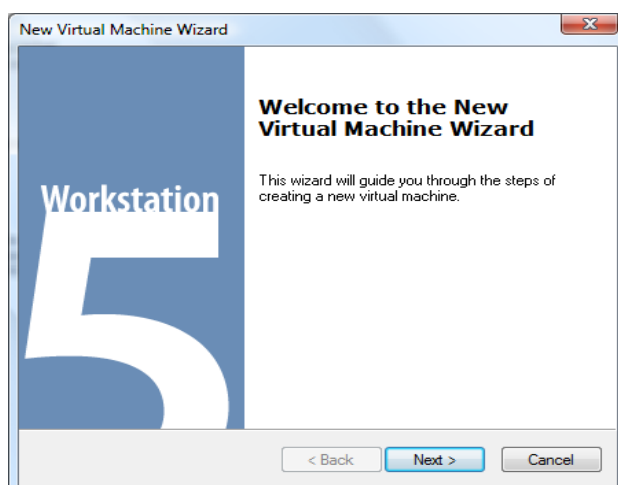
*Seluruh dokumen di IlmuKomputer.Com dapat digunakan, dimodifikasi dan disebarkan secara bebas untuk tujuan bukan komersial (nonprofit), dengan syarat tidak menghapus atau merubah atribut penulis dan pernyataan copyright yang disertakan dalam setiap dokumen. Tidak diperbolehkan melakukan penulisan ulang, kecuali mendapatkan ijin terlebih dahulu dari IlmuKomputer.Com.*

Pada Bab ini saya akan menjelaskan step by step tata cara urutan mulai dari konfigurasi penginstallan Windows XP 2 di VMWare sampai pada proses instalasi Windows XP 2 pada mesin VMWare. Pembahasannya pada materi dibawah ini.

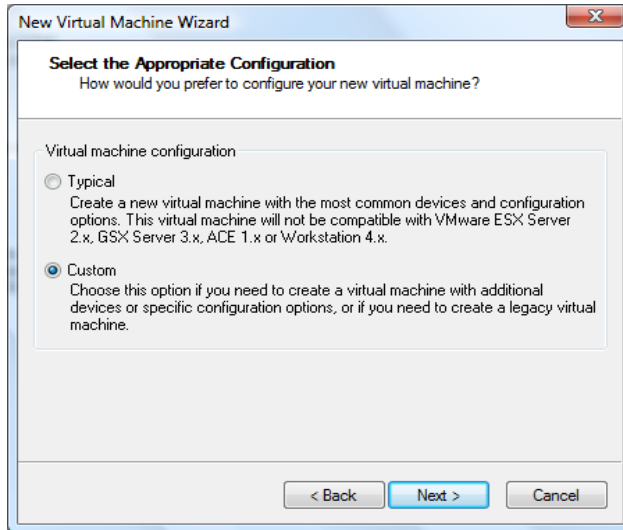
## **Tutorial Install Microsoft Windows XP 2 di dalam WM Ware :**

Pertama kita harus menyetting konfigurasi VM Ware terlebih dahulu untuk menginstall SO yang baru dengan langkah berikut :

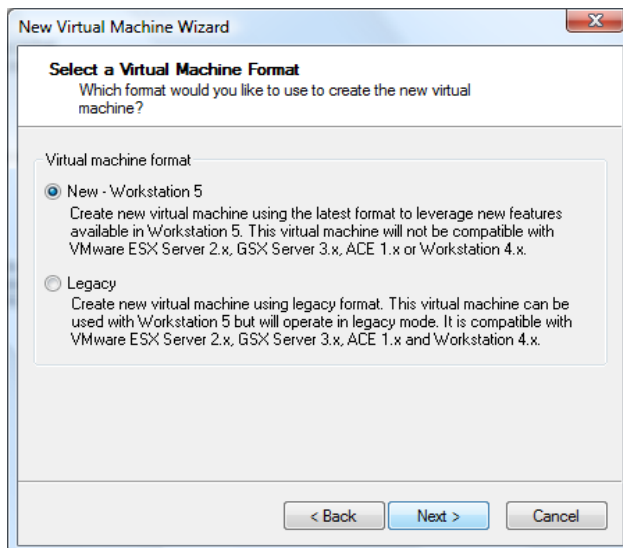
1. Klik New Virtual Machine untuk membuat mesin virtual baru. Klik Next.



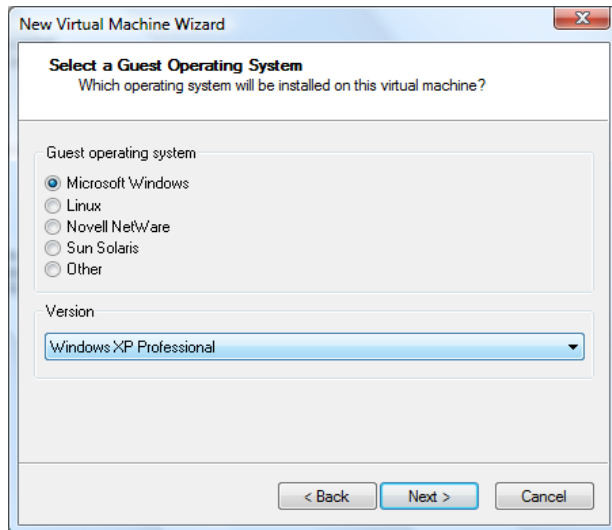
2. Klik Custom untuk menambah konfigurasi peralatan secara spesifik.



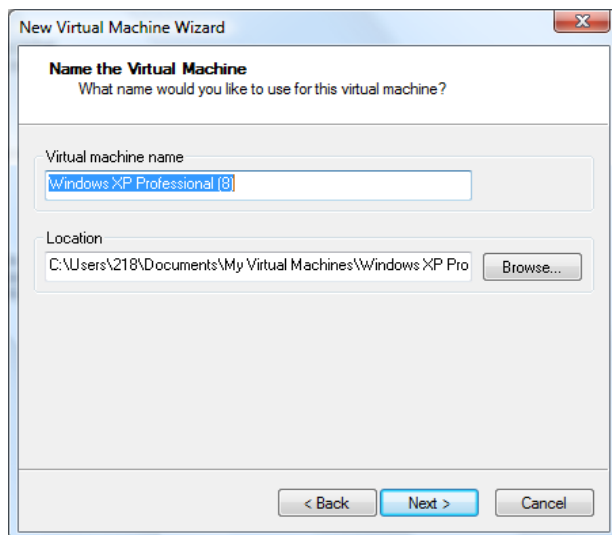
3. Pilih New-Workstation 5 untuk memilih agar bisa mengatur konfigurasi jaringan anda. Kemudian Next.



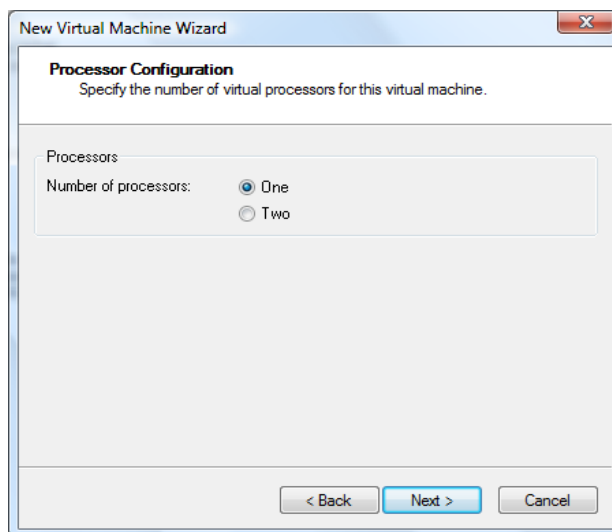
4. Pilih Microsoft Windows sebagai Corporation SO anda dan isikan Windows XP Professional sebagai versinya.



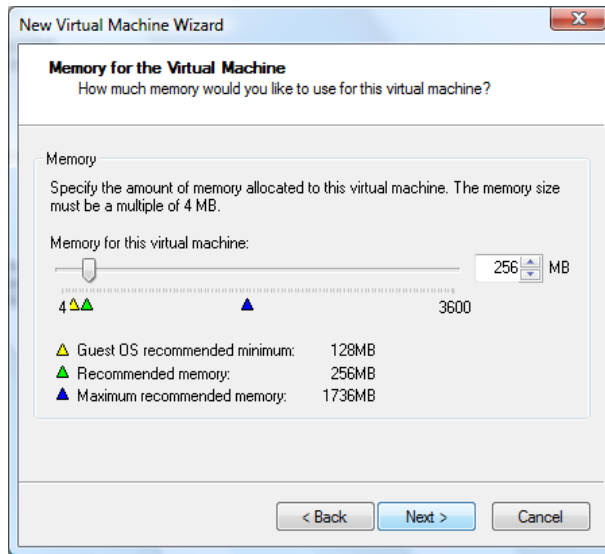
5. Pilih peletakan dokumen Installan anda.



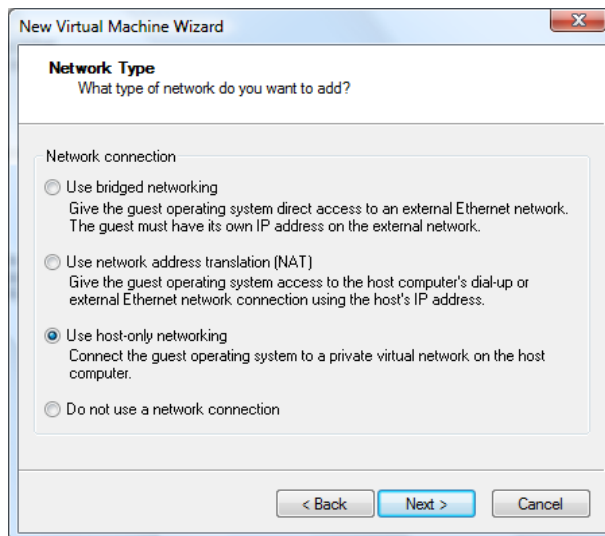
6. Centang One untuk Processornya, lalu next.



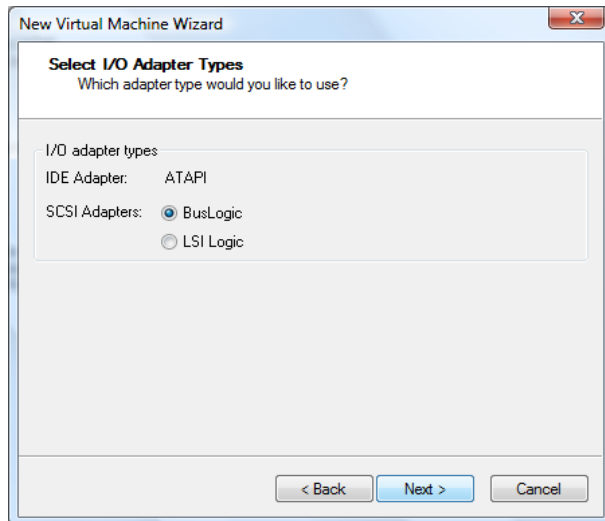
7. Atur seberapa besar kapasitas memory yang anda inginkan pada SO anda, lalu next.



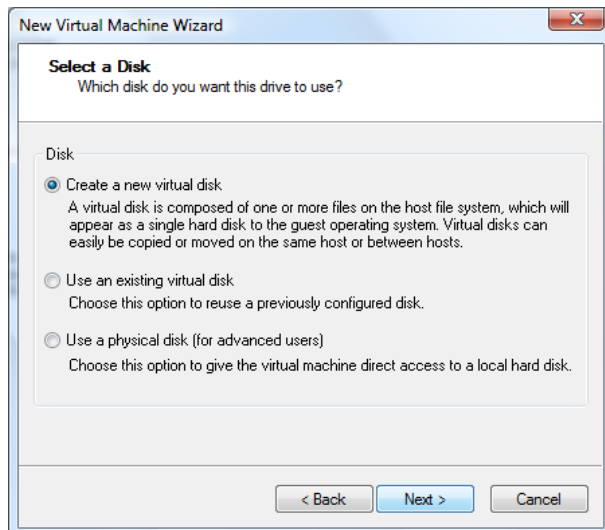
8. Pilih Use Host-Only Networking untuk mengatur jenis konfigurasi jaringan anda.



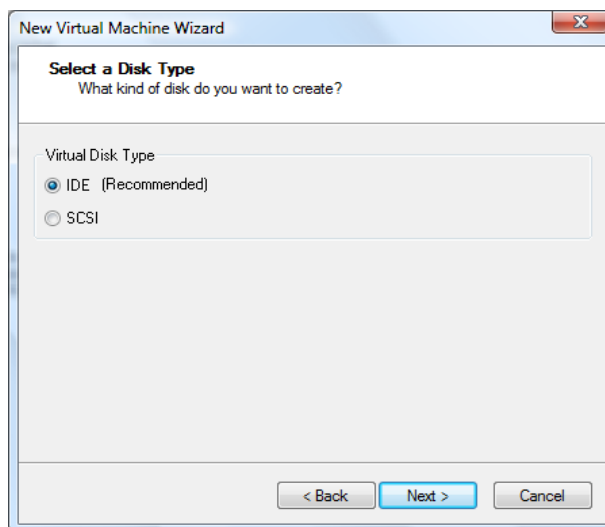
9. Untuk I/O Adapter pilih Bus Logic, kemudian next.



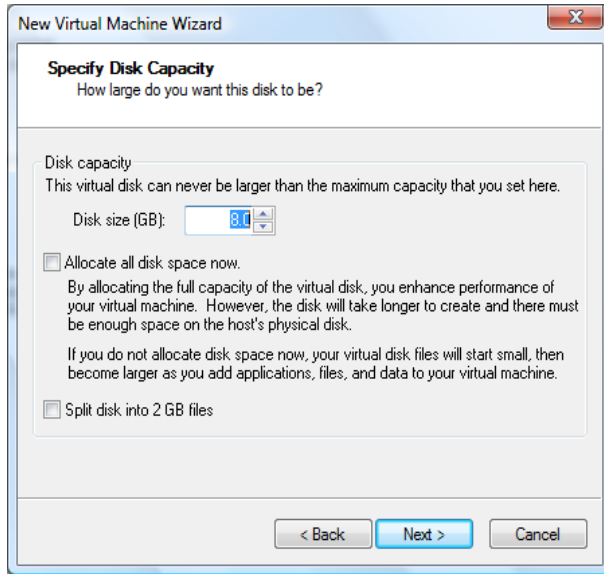
10. Pilih Create a new virtual disk untuk membuat mesin virtualmu yang baru.



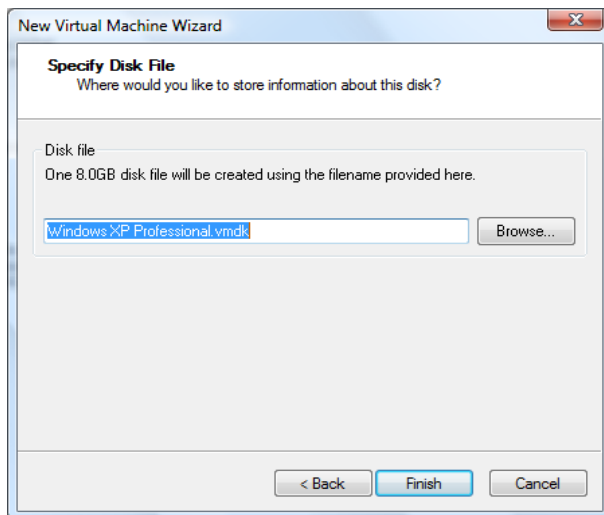
11. Untuk Select a disk type, pilih jenis IDE, karena sudah direkomendasi.



12. Pilih seberapa besar kapasitas yang di inginkan untuk mesin virtual anda.

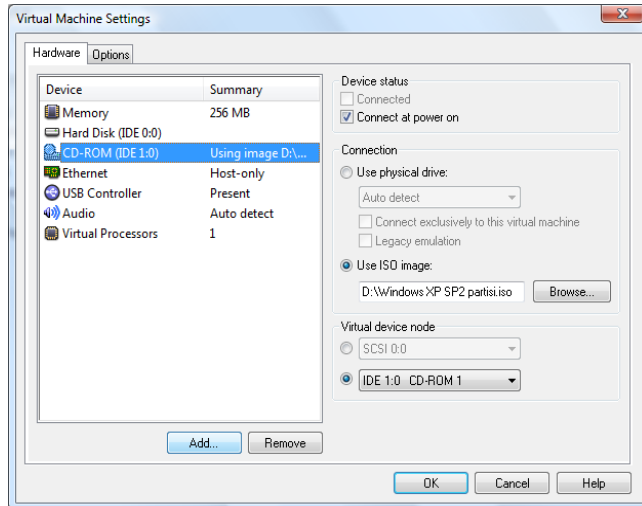


13. Pilih Peletakan file Windows XP virtual anda, lalu klik Finish.

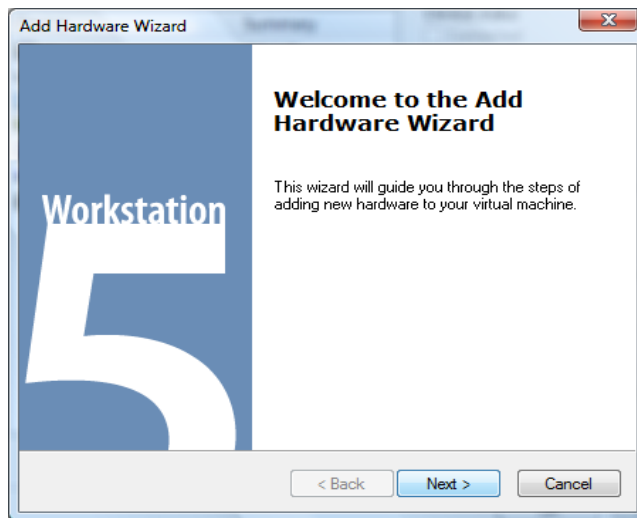


Kedua yang harus anda lakukan adalah mengatur dan mengedit jenis hardware beserta kapasitasnya pada SO yang akan anda Install dengan langkah berikut :

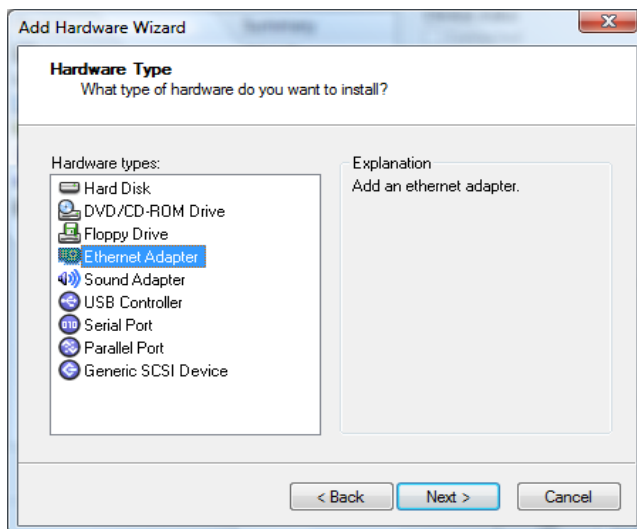
1. Klik Edit Virtual Machine Settings untuk memulai. Pilih CD-ROM (IDE 1:0), Centang Use ISO image dan Isikan jenis SO yang akan anda Install, jangan lupa juga untuk mencentang IDE 1:0 CD-ROM 1, Klik Add untuk menambah konfigurasiannya.



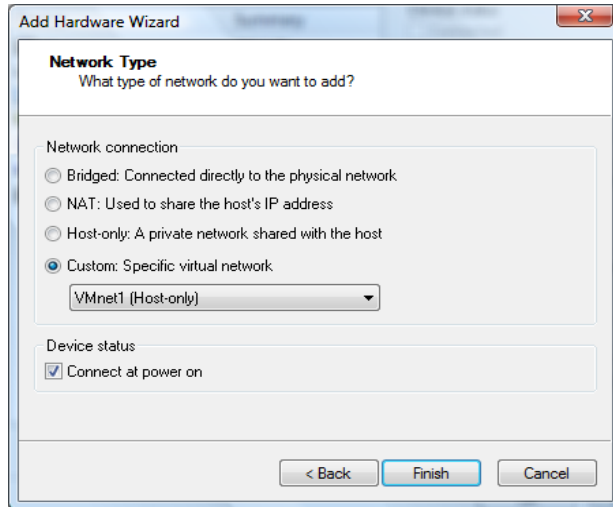
2. Klik next untuk melanjutkan dan menyimpan konfigurasi CD-ROM tadi.



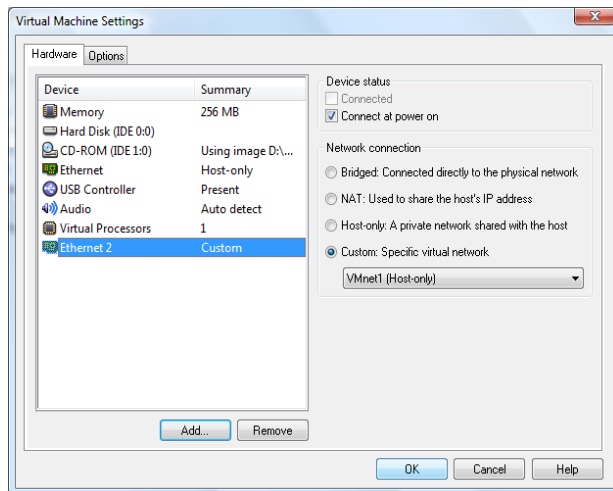
3. Pilih Ethernet Adapter untuk mengonfigurasi Kartu jaringan, klik next.



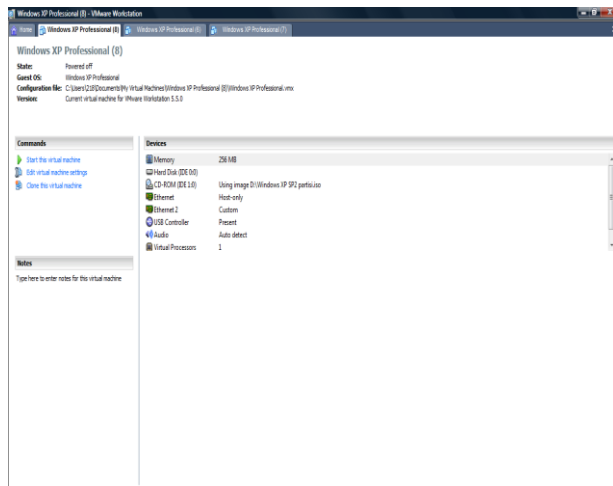
- Centang kotak dialog Custom Specific Virtual Network, lalu pilih VM Net 1 (Host Only) untuk jenis jaringan anda.



- Kartu Jaringan anda sudah tertambah, lalu klik Add.



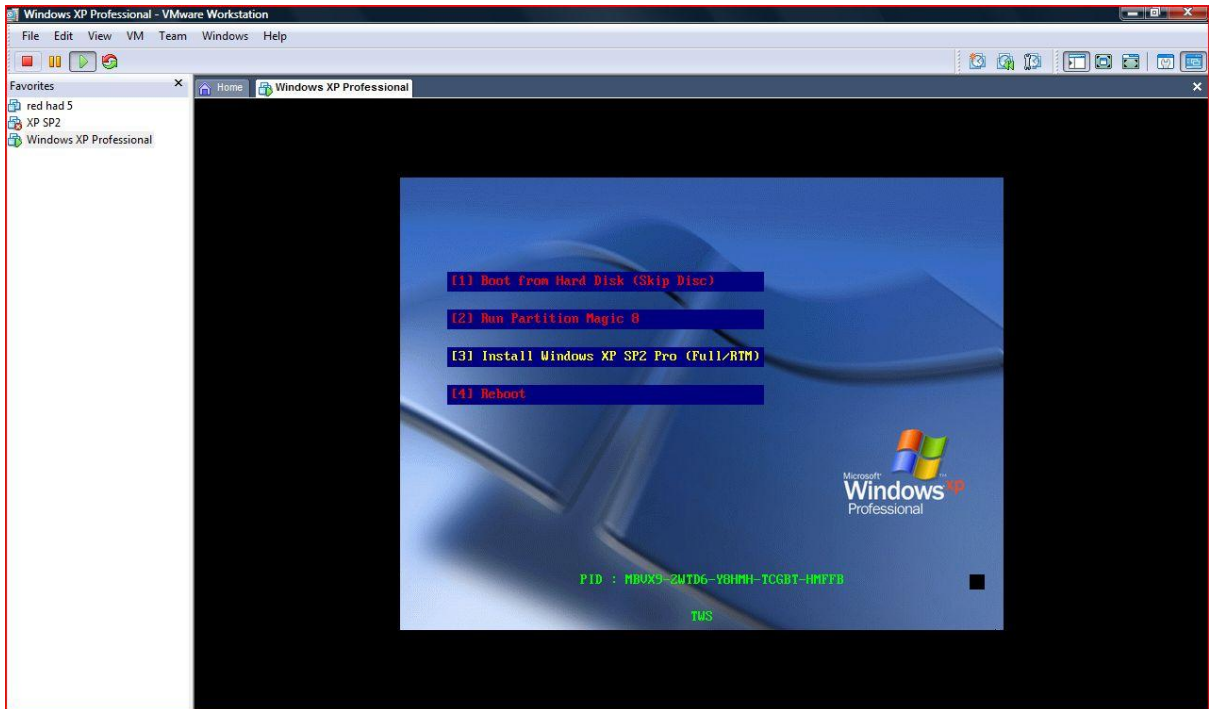
- Pilih Start this virtual machine untuk memulai Proses Penginstallan anda.





## Tutorial Proses Instalasi Windows XP SP2 dalam Oracle VMWare.

1. Pilih Install Windows XP SP2 Pro.



2. Konfigurasi Windows Setup telah Tertampil.



3. Tekan Enter untuk melanjutkan Konfigurasi.

```
Windows XP Professional Setup

Welcome to Setup.

This portion of the Setup program prepares Microsoft(R)
Windows(R) XP to run on your computer.

• To set up Windows XP now, press ENTER.
• To repair a Windows XP installation using
  Recovery Console, press R.
• To quit Setup without installing Windows XP, press F3.

ENTER=Continue  R=Repair  F3=Quit
```

4. Pilih F8 untuk menyetujui.

```
Windows XP Licensing Agreement

Microsoft Windows XP Professional
END-USER LICENSE AGREEMENT

IMPORTANT-READ CAREFULLY: This End-User
License Agreement ("EULA") is a legal agreement between you
(either an individual or a single entity) and Microsoft
Corporation for the Microsoft software product identified above,
which includes computer software and may include associated
media, printed materials, "online" or electronic documentation,
and Internet-based services ("Product"). An amendment or
addendum to this EULA may accompany the Product. YOU AGREE TO BE
BOUND BY THE TERMS OF THIS EULA BY
INSTALLING, COPYING, OR OTHERWISE USING THE
PRODUCT. IF YOU DO NOT AGREE, DO NOT INSTALL
OR USE THE PRODUCT; YOU MAY RETURN IT TO YOUR
PLACE OF PURCHASE FOR A FULL REFUND.

1. GRANT OF LICENSE. Microsoft grants you the following rights
provided that you comply with all terms and conditions of
this EULA:

* Installation and use. You may install, use, access,
display and run one copy of the Product on a single
computer, such as a workstation, terminal or other device
("Workstation Computer"). The Product may not be used
by more than two (2) processors at any one time on any

F8=I agree  ESC=I do not agree  PAGE DOWN=Next Page
```

5. Tekan C untuk menulis seberapa besar partisi hardisk yang anda inginkan.

```
Windows XP Professional Setup

The following list shows the existing partitions and
unpartitioned space on this computer.

Use the UP and DOWN ARROW keys to select an item in the list.

• To set up Windows XP on the selected item, press ENTER.
• To create a partition in the unpartitioned space, press C.
• To delete the selected partition, press D.

2048 MB Disk 0 at Id 0 on bus 0 on atapi [MBR]
  Unpartitioned space                2047 MB

ENTER=Install  C=Create Partition  F3=Quit
```

6. Sebagai contoh saja 1020 MB, kemudian tekan Enter untuk melanjutkan.

```
Windows XP Professional Setup

You asked Setup to create a new partition on
2048 MB Disk 0 at Id 0 on bus 0 on atapi [MBR].

• To create the new partition, enter a size below and
  press ENTER.
• To go back to the previous screen without creating
  the partition, press ESC.

The minimum size for the new partition is      4 megabytes (MB).
The maximum size for the new partition is 1020 megabytes (MB).
Create partition of size <in MB>: 1020
```

7. Setelah di partisi tekan Enter untuk melanjutkan proses Instalasi.

```
Windows XP Professional Setup

The following list shows the existing partitions and
unpartitioned space on this computer.

Use the UP and DOWN ARROW keys to select an item in the list.

• To set up Windows XP on the selected item, press ENTER.
• To create a partition in the unpartitioned space, press C.
• To delete the selected partition, press D.

2048 MB Disk 0 at Id 0 on bus 0 on atapi [MBR]
C: Partition1 [New <Raw>] 1024 MB < 1023 MB free>
E: Partition2 [New <Raw>] 1020 MB < 1019 MB free>
  Unpartitioned space 4 MB

ENTER=Install D=Delete Partition F3=Quit
```

8. Pilih jenis File System yang anda inginkan, kemudian Enter dan tunggu prosesnya.

```
Windows XP Professional Setup

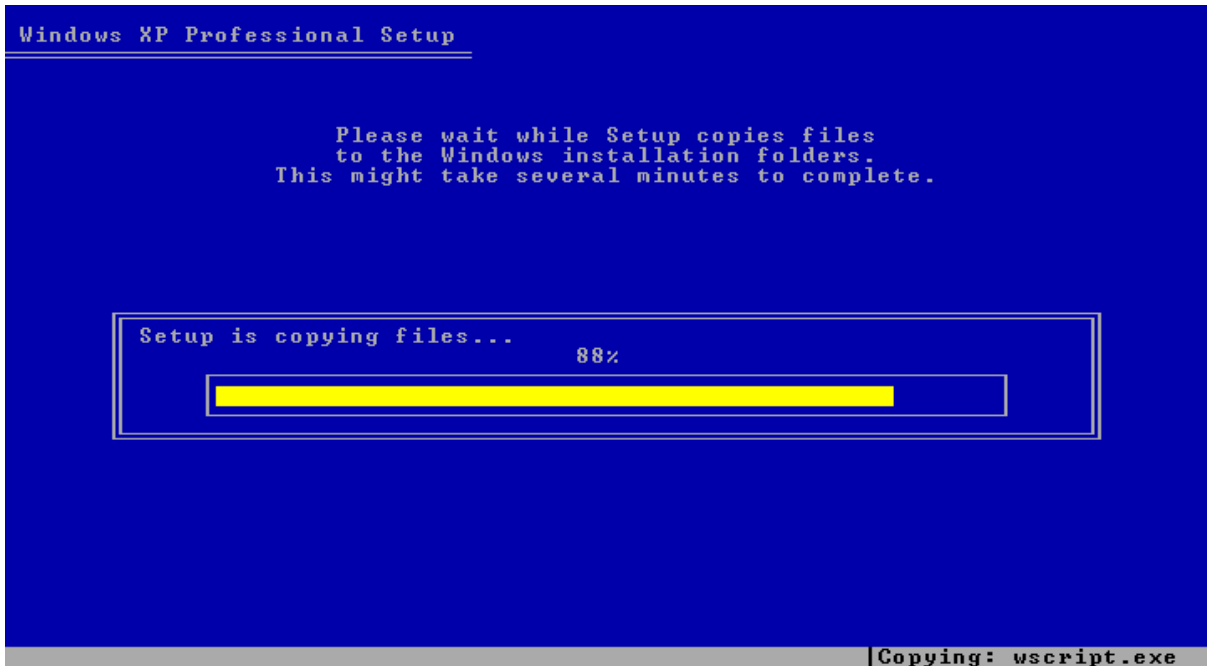
The partition you selected is not formatted. Setup will now
format the partition.

Use the UP and DOWN ARROW keys to select the file system
you want, and then press ENTER.

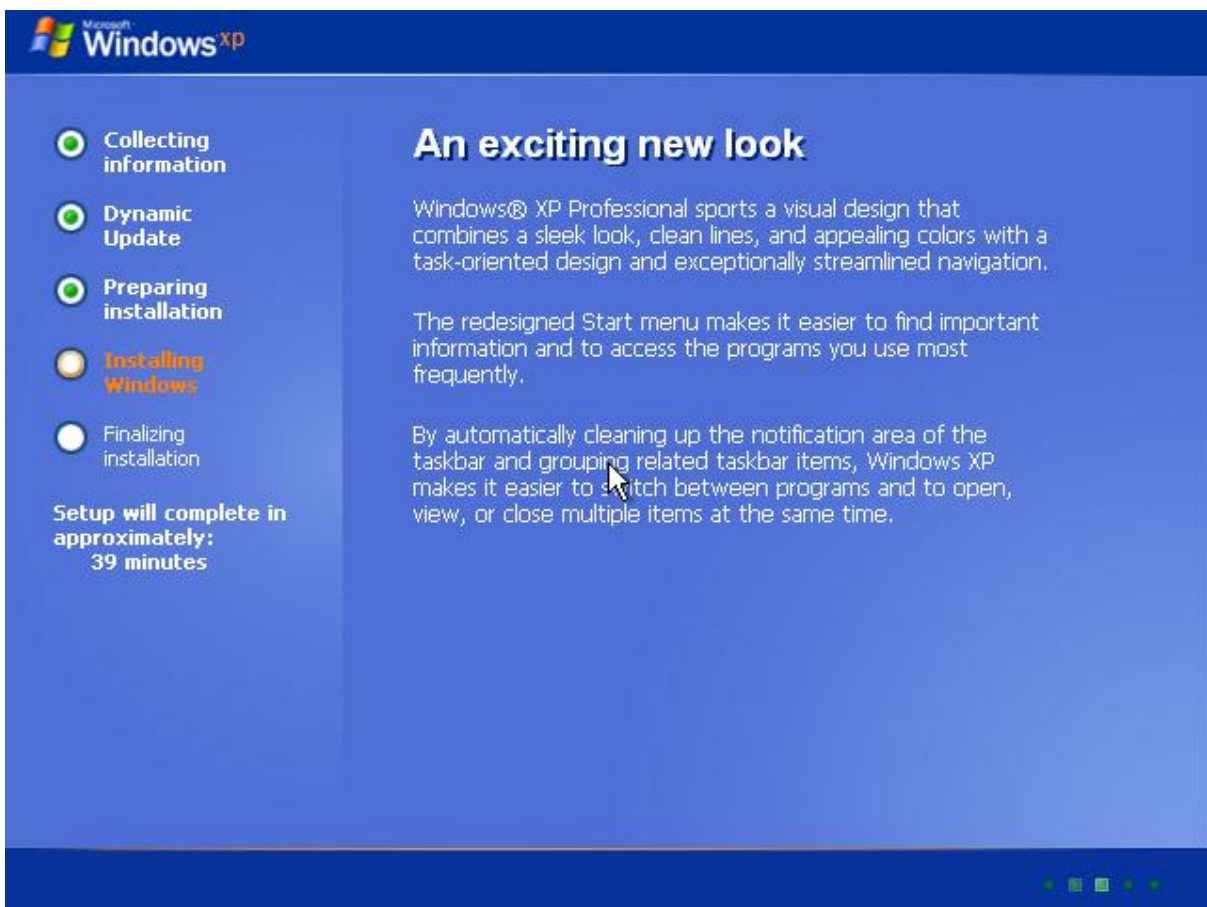
If you want to select a different partition for Windows XP,
press ESC.

Format the partition using the NTFS file system <Quick>
Format the partition using the FAT file system <Quick>
Format the partition using the NTFS file system
Format the partition using the FAT file system

ENTER=Continue ESC=Cancel
```



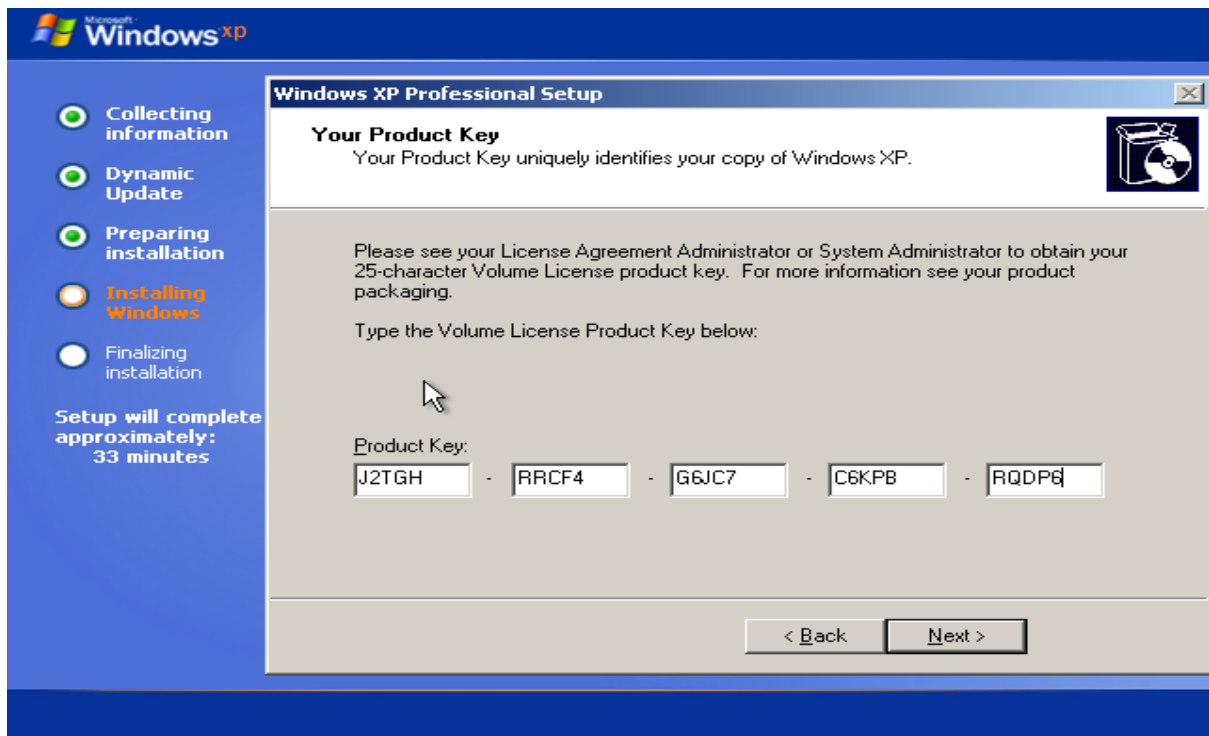
9. Bila Setup Windows anda sudah sukses, maka tampilannya akan berubah seperti dibawah ini untuk persiapan proses Installasi berikutnya.



10. Bila ada tampilan berikut, maka Pilih jenis bahasa yang ingin anda gunakan pada SO anda nantinya, kemudian klik next.



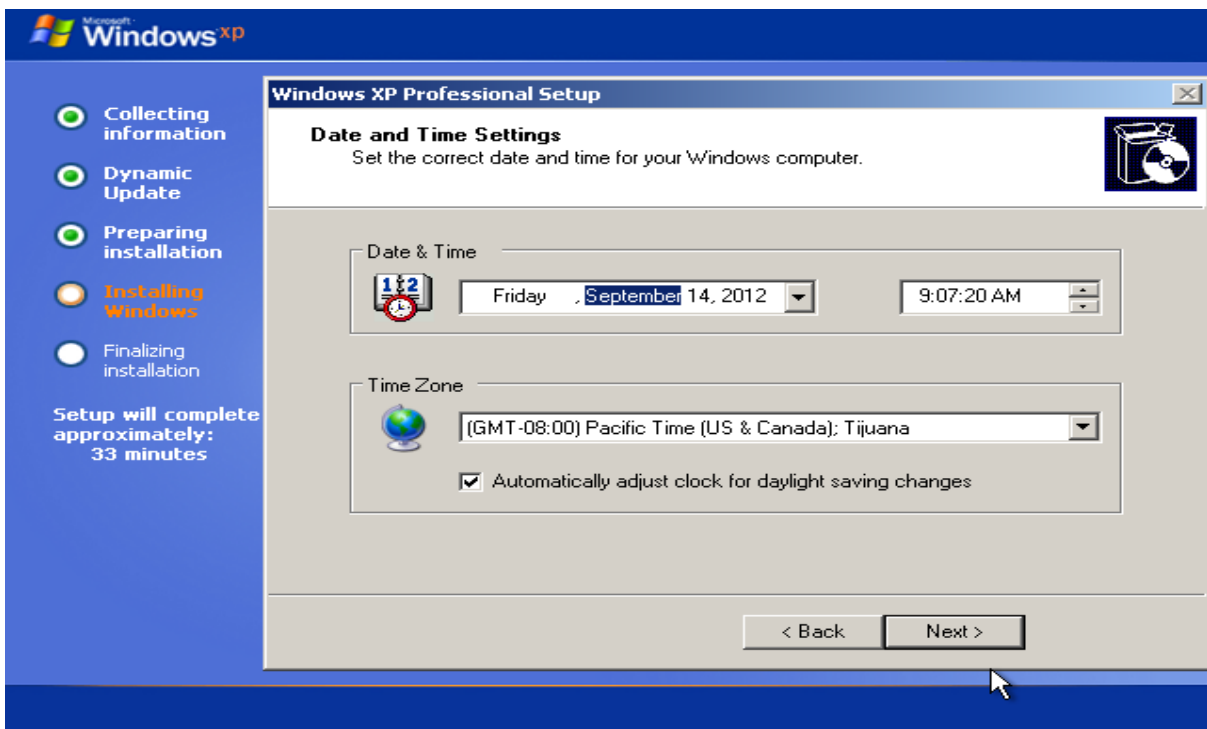
11. Masukkan Serial Number Windows XP SP2 yang anda Install.

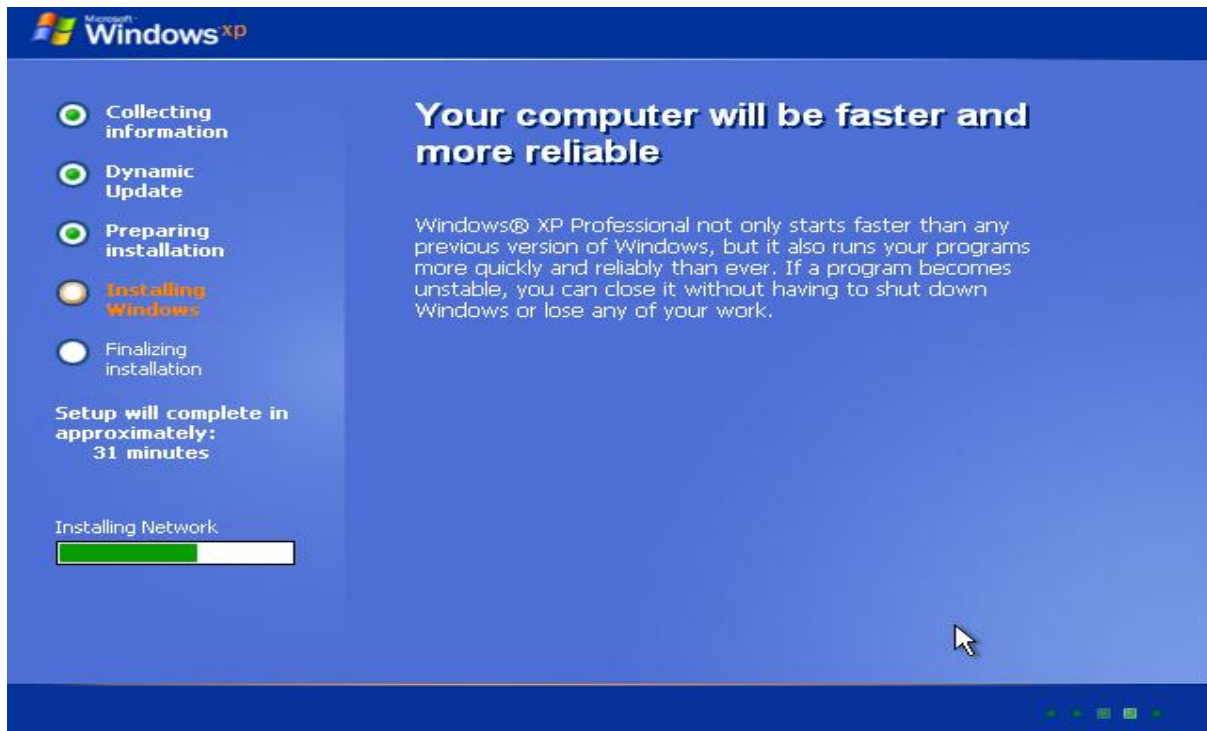


12. Masukkan Computer Name anda, lalu next.

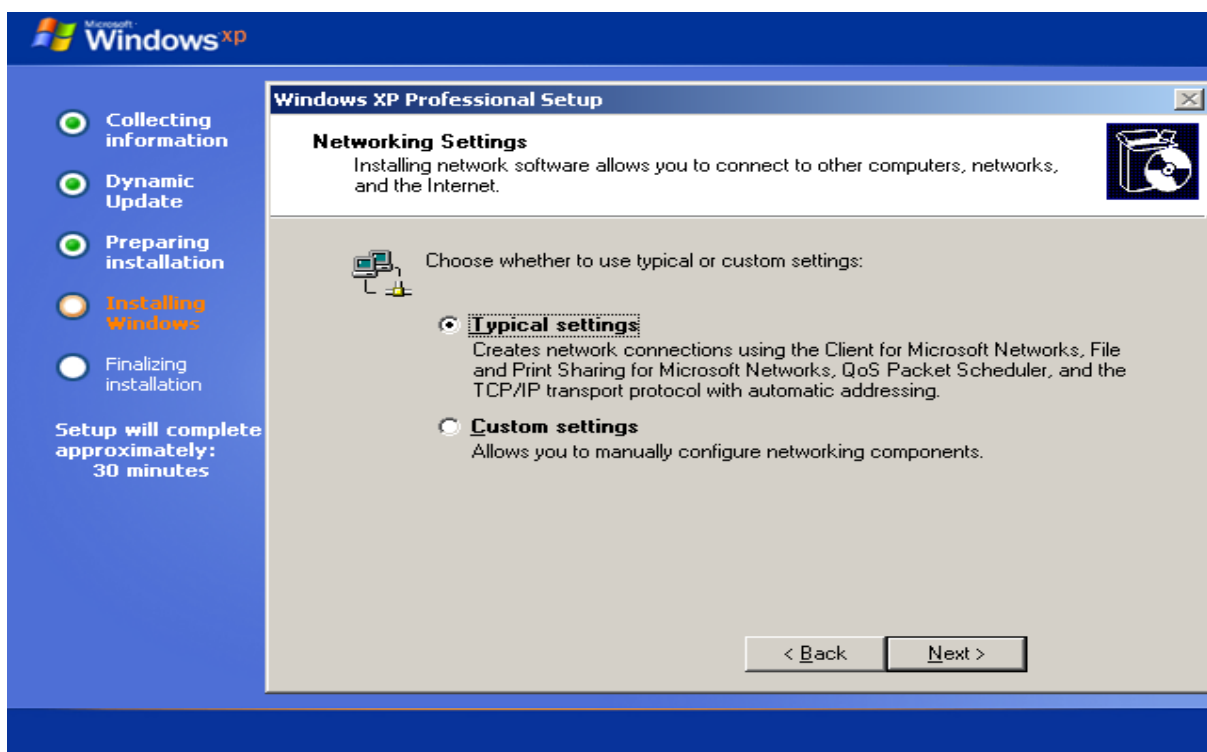


13. Atur Konfigurasi Waktu dan Tanggal, klik next. Tunggu proses setupnya.

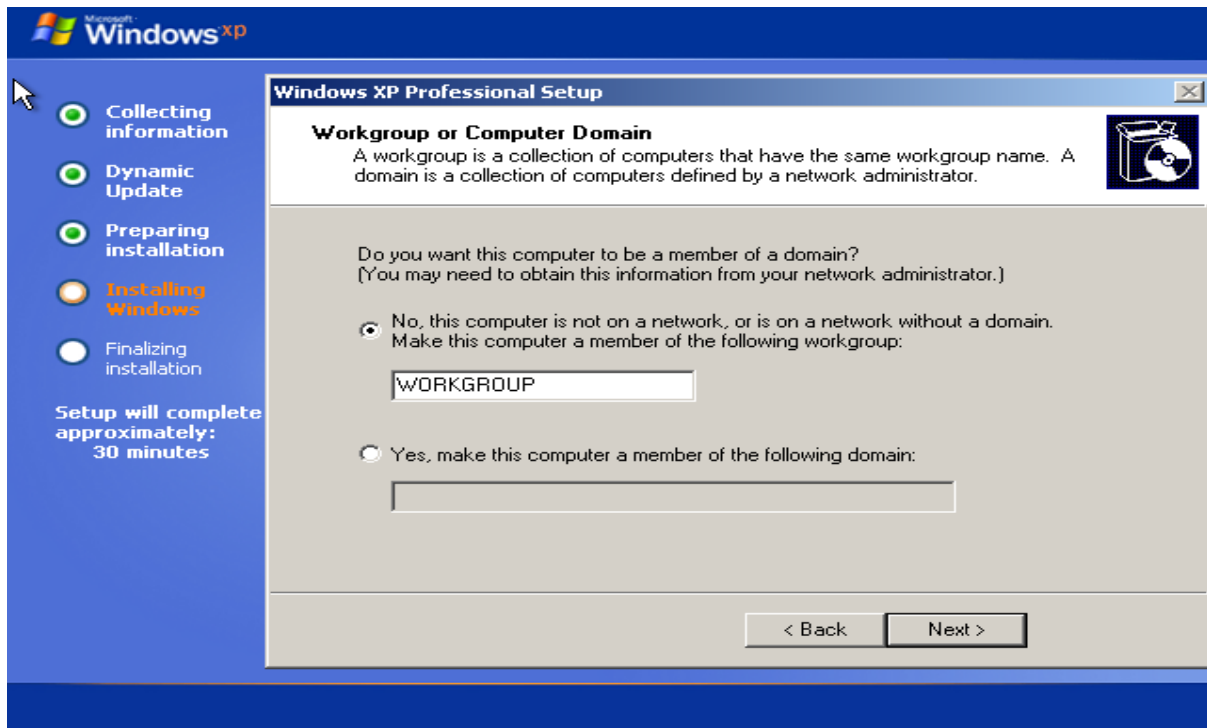




14. Pilih Typical Setting. Kemudian Klik Next. Lalu Tunggu proses penyelesaian Instalasi.







Microsoft Windows XP

- Collecting information
- Dynamic Update
- Preparing installation
- Installing Windows**
- Finalizing installation

Setup will complete in approximately: **23 minutes**

Completing installation...

### Easily move documents and personal settings to a new computer

If you've had a computer for a while, you've probably gotten it set up the way you like. Files are organized a certain way, you have bookmarked a long list of favorite Web sites, and you've customized your desktop just the way you want it.

Those personal settings won't be wiped out when you buy a new computer with Windows® XP. With the Files and Settings Transfer Wizard, it's simple to move your files and settings from one computer to another.

The wizard is located in the System Tools folder. For a command-line version that system administrators can use on multiple computers at once, try the User State Migration Tool (USMT) in the ValueAdd folder.

Progress bar: 75% complete

Microsoft Windows XP

- Collecting information
- Dynamic Update
- Preparing installation
- Installing Windows**
- Finalizing installation

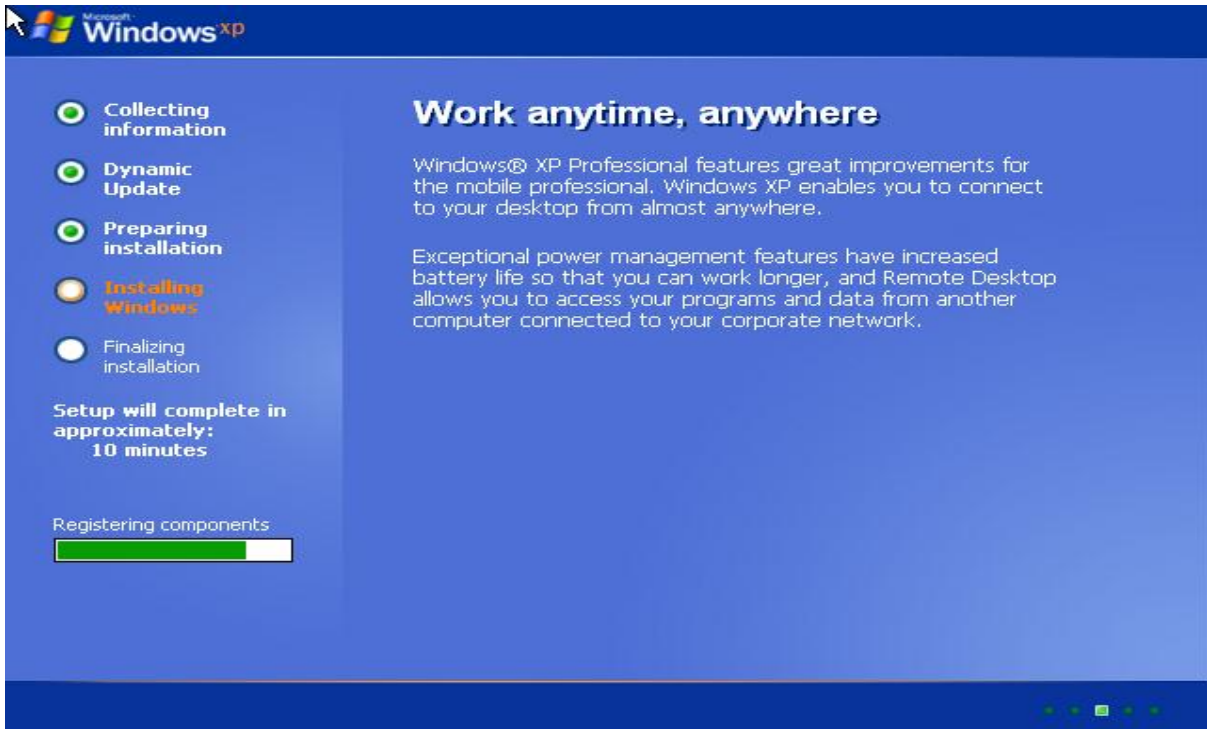
Setup will complete in approximately: **19 minutes**

Installing Start menu items

### Surfing the Internet: safe, fast, and flexible

Windows® XP includes the most secure version of Internet Explorer to date. Many new features help enhance the security and privacy of information that you send and receive over the Internet, while simplifying the daily tasks that you perform. New innovative browser capabilities--such as a pop-up blocker, the ability to control plug-ins, and more--let you experience the Web exactly the way that you want.

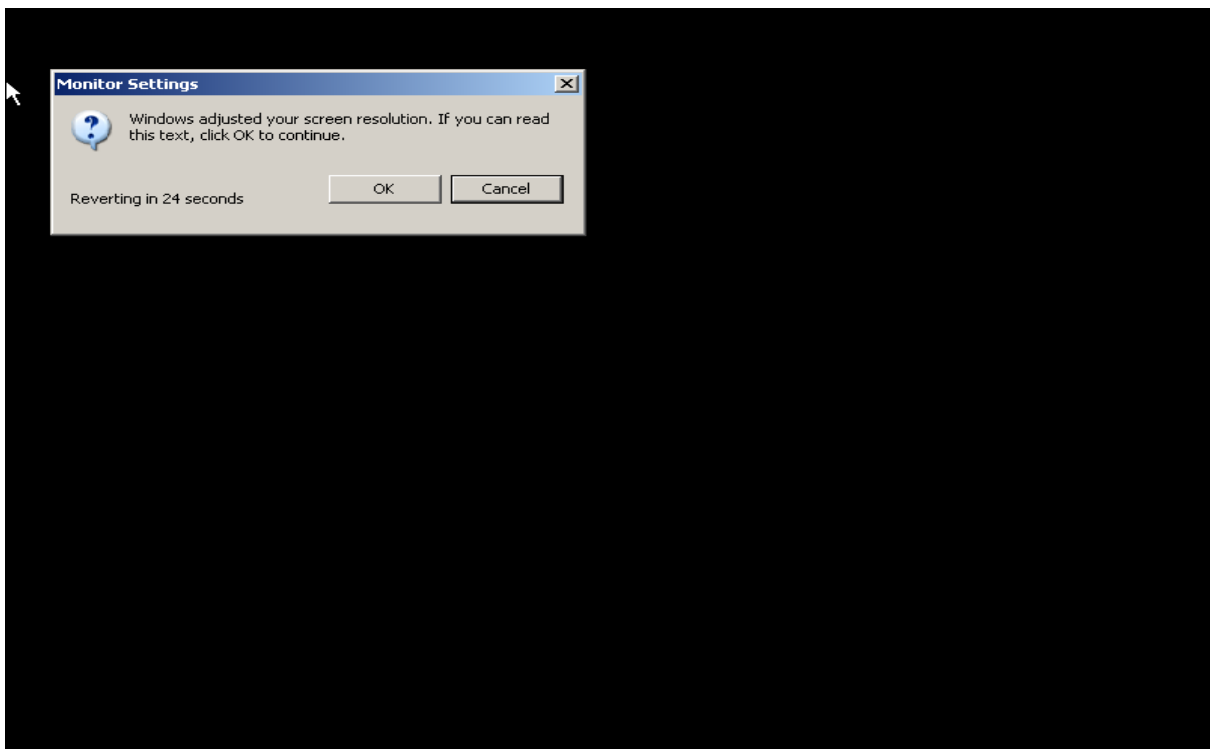
Progress bar: 100% complete



15. Bila ada tampilan seperti ini berarti Windows anda sudah terinstall.



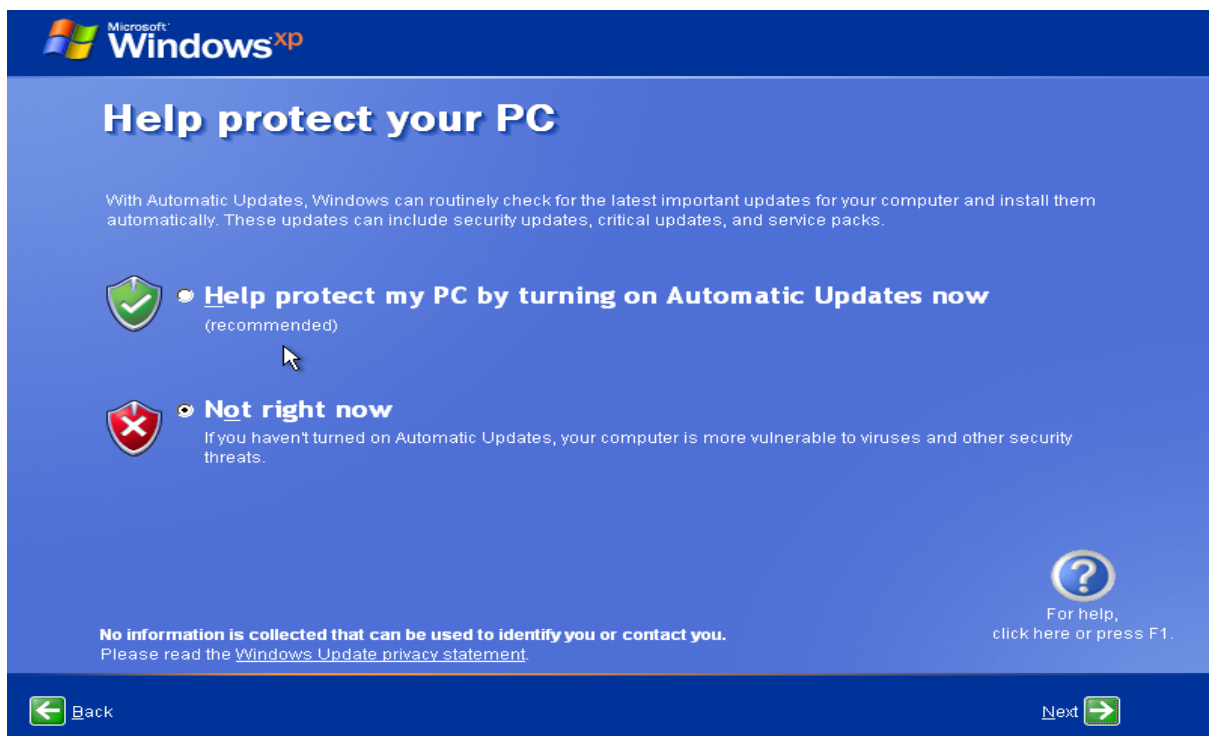
16. Windows akan otomatis mengatur resolusi pada monitor anda. Klik OK. Kemudian Klik OK lagi.



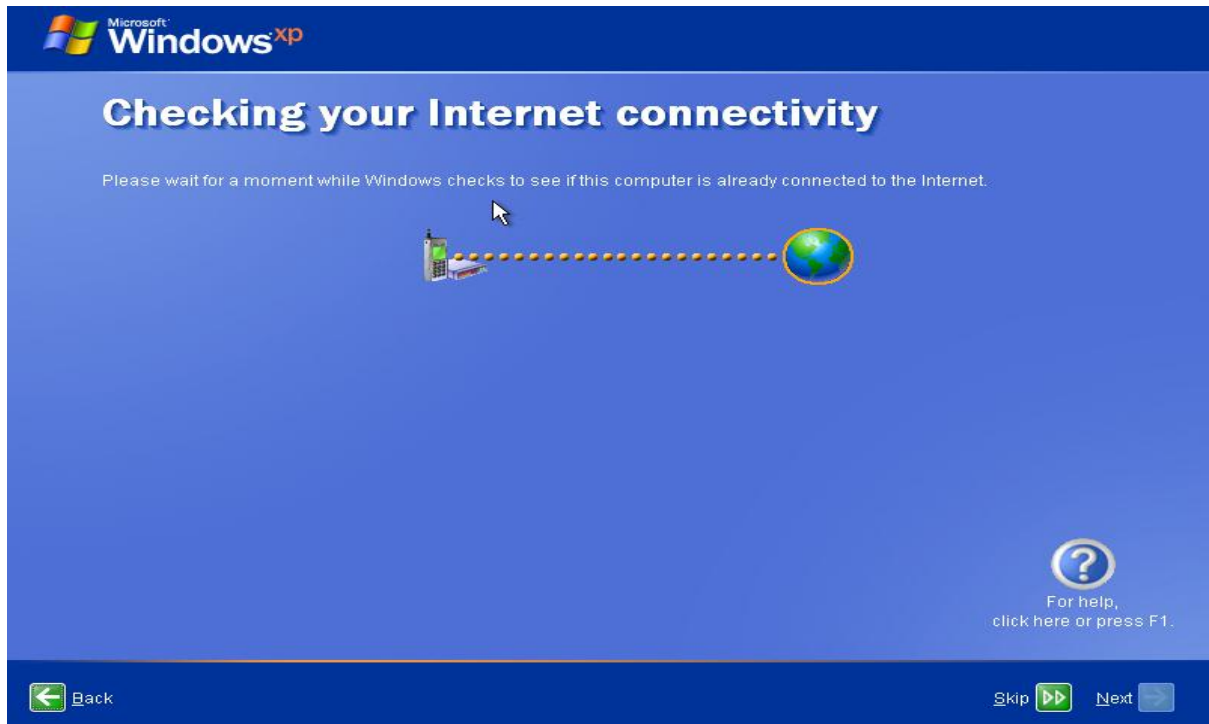
17. Bila ada tampilan berikut, klik next untuk melanjutkan.



18. Pilih Not Right Now, lalu klik next.



19. Pilih skip, lalu klik next.



20. Pilih No, not at this time, klik next



21. Isikan nama anda sebagai user.

The screenshot shows the 'Who will use this computer?' screen in Windows XP. At the top left is the Microsoft Windows XP logo. The main heading is 'Who will use this computer?'. Below it, a paragraph explains that Windows will create separate user accounts for each person. There are five input fields for user names, with the first one containing 'IKA\_NUR\_KHANA'. Below the fields, a paragraph explains that names will appear in alphabetical order and provides instructions on how to start Windows and access the Control Panel. At the bottom right, there is a help icon (a question mark in a circle) with the text 'For help, click here or press F1.'. At the bottom left, there is a 'Back' button with a left arrow, and at the bottom right, there is a 'Next' button with a right arrow.

22. SO anda sudah berhasil terinstall secara complete. Klik Finish. SO anda sudah jadi dan siap di operasikan.

The screenshot shows the 'Thank you!' screen in Windows XP. At the top left is the Microsoft Windows XP logo. The main heading is 'Thank you!'. Below it, a paragraph congratulates the user and provides information about the product tour and the Help and Support Center. At the bottom right, there is a help icon (a question mark in a circle) with the text 'For help, click here or press F1.'. At the bottom right, there is a 'Finish' button with a right arrow.





## Biografi Penulis



**Ika Nur Khana.** Mahasiswi Aktif Politeknik Negeri Semarang

Jurusan Teknik Elektro program study Teknik Telekomunikasi

Silakan berkunjung dan bergabung di blog saya

<http://ikha-khana.blogspot.com>