

## DHCP SERVER DEBIAN WOODY

**Mega Elinda A.**

[lynda.loverscake@gmail.com](mailto:lynda.loverscake@gmail.com)

<http://nunalinda.blogspot.com>

### **Lisensi Dokumen:**

Copyright © 2003-2007 IlmuKomputer.Com

Seluruh dokumen di IlmuKomputer.Com dapat digunakan, dimodifikasi dan disebarkan secara bebas untuk tujuan bukan komersial (nonprofit), dengan syarat tidak menghapus atau merubah atribut penulis dan pernyataan copyright yang disertakan dalam setiap dokumen. Tidak diperbolehkan melakukan penulisan ulang, kecuali mendapatkan ijin terlebih dahulu dari IlmuKomputer.Com.

Tutorial ini membahas tentang instalasi DHCP server di debian woody.

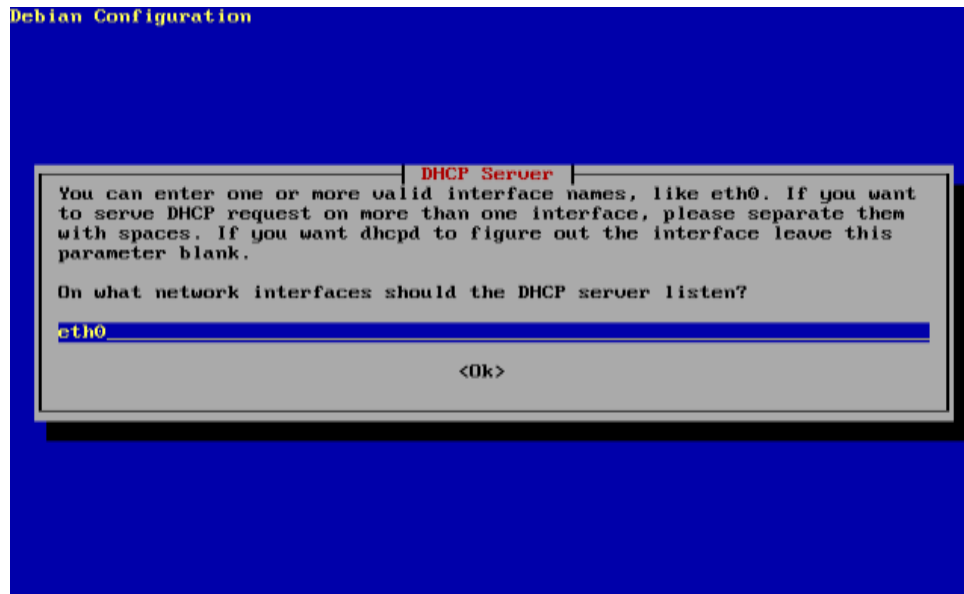
1. Pertama kali harus mengecek LAN Card yang ada. Caranya ketik **ifconfig**
2. Menginstal file-file dhcp. Ketik **apt-get install dhcp3-server**.
3. Selanjutnya ketik **"Y"**.

```
Repeat this process for the rest of the CDs in your set.
kelompok12:~# apt-cdrom add
Using CD-ROM mount point /cdrom/
Unmounting CD-ROM
Please insert a Disc in the drive and press enter
Mounting CD-ROM

Identifying.. [0c4a5e1a209acb1b4a27bcaaab235326-21]
Scanning Disc for index files.. Found 4 package indexes and 0 source indexes.
Found label 'Debian GNU/Linux 3.0r6 Update CD 20050603: i386 CD 2'
This Disc is called:
'Debian GNU/Linux 3.0r6 Update CD 20050603: i386 CD 2'
Reading Package Indexes... Done
Wrote 426 records.
Writing new source list
Source List entries for this Disc are:
deb cdrom:[Debian GNU/Linux 3.0r6 Update CD 20050603: i386 CD 2]/ woody contrib
main non-US/contrib non-US/main
Repeat this process for the rest of the CDs in your set.
kelompok12:~#
kelompok12:~# apt-get install dhcp3-server
Reading Package Lists... Done
Building Dependency Tree... Done
The following extra packages will be installed:
  dhcp3-common
The following NEW packages will be installed:
  dhcp3-common dhcp3-server
0 packages upgraded, 2 newly installed, 0 to remove and 0 not upgraded.
Need to get 0B/644kB of archives. After unpacking 1495kB will be used.
Do you want to continue? [Y/n]
```

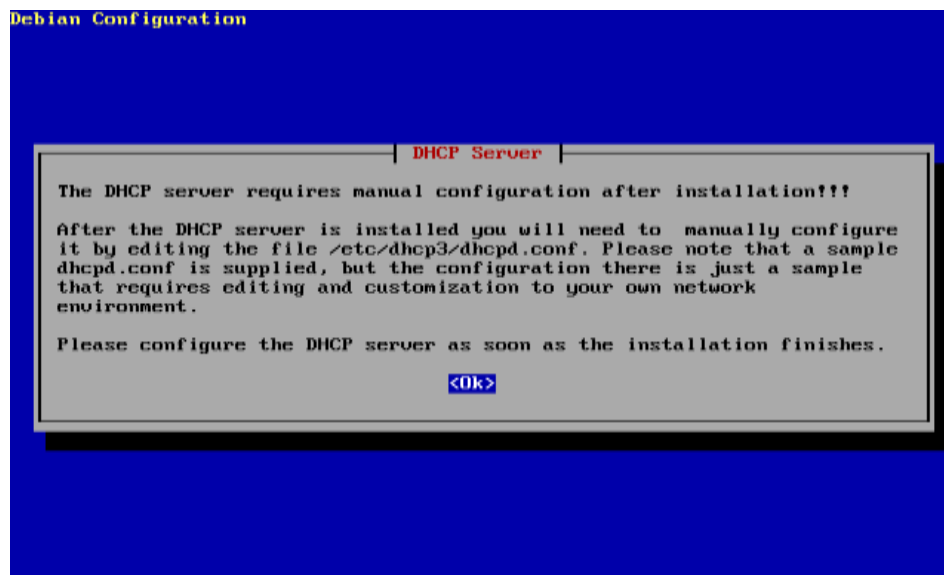
Gambar 1.1

4. Pada kotak dialog ini isi eth yang pertama (eth0 / eth1)



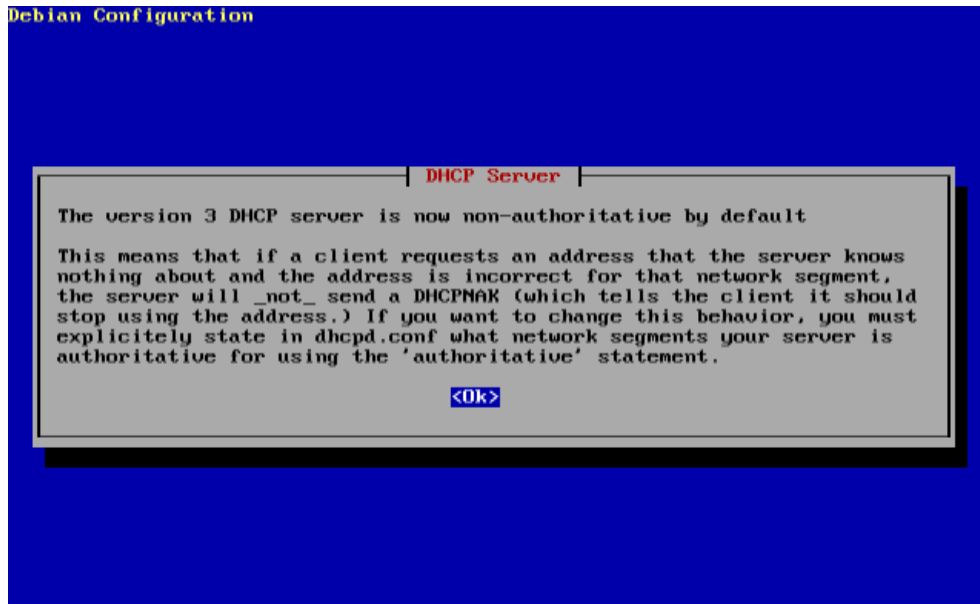
Gambar 1.2

5. Pilih "OK"



Gambar 1.3

5. Pilih “OK”



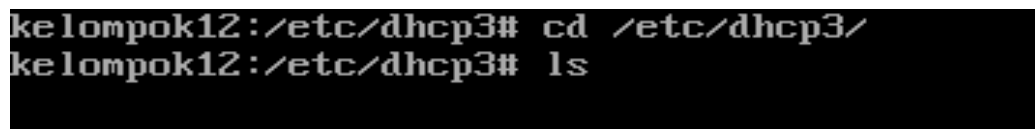
Gambar 1.4

6. Ketik “cd /etc/dhcp3/”



Gambar 1.5

7. Ketik “ls”



Gambar 1.6

8. Ketik “vi dhcpd.conf”

```
kelompok12:/etc/dhcp3# cd /etc/dhcp3/  
kelompok12:/etc/dhcp3# ls  
dhcpd.conf  
kelompok12:/etc/dhcp3# vi dhcpd.conf
```

Gambar 1.7

9. Agar mempermudah pencarian line, Ketik “:set number”

```
default-lease-time 600;  
max-lease-time 7200;  
  
# If this DHCP server is the official DHCP server for the local  
# network, the authoritative directive should be uncommented.  
#authoritative;  
  
# Use this to send dhcp log messages to a different log file (you also  
# have to hack syslog.conf to complete the redirection).  
log-facility local?;  
  
# No service will be given on this subnet, but declaring it helps the  
# DHCP server to understand the network topology.  
:set number
```

Gambar 1.8

10. Cari line ke 50,1 .Hilangi tanda # mulai tulisan “subnet” sampai tanda “}” . Pada subnet di isi ip server dan segmen terakhir harus 0. Pada range di isi ip clien. Pada option domain name di isi “stemba.sch.id”. option routers di isi ip server dan segmen terakhir diganti 254. Pada option broadcast-address diisi ip server dan segmen terakhir diganti 255. Selanjutnya disimpan. Caranya ketik “:wq”.

```
49  
50 # A slightly different configuration for an internal subnet.  
51 subnet 192.168.12.0 netmask 255.255.255.224 {  
52   range 192.168.12.1 192.168.12.10;  
53   option domain-name-servers ns1.internal.example.org;  
54   option domain-name "stemba.sch.id";  
55   option routers 192.168.12.254;  
56   option broadcast-address 192.168.12.255;  
57   default-lease-time 600;  
58   max-lease-time 7200;  
59 }  
60  
61 # Hosts which require special configuration options can be listed in  
62 # host statements.  If no address is specified, the address will be  
63 # allocated dynamically (if possible), but the host-specific information  
64 # will still come from the host declaration.  
65  
66 #host passacaglia {  
67 #   hardware ethernet 0:0:c0:5d:bd:95;  
68 #   filename "umunix.passacaglia";  
69 #   server-name "toccata.fugue.com";  
70 #}  
71  
:wq
```

Gambar 1.9

11. Langkah terakhir adalah me-restart. Caranya ketik “/etc/init.d/dhcp3-server restart”.

```
44 #subnet 10.254.239.32 netmask 255.255.255.224 {
45 #   range dynamic-bootp 10.254.239.40 10.254.239.60;
46 #   option broadcast-address 10.254.239.31;
47 #   option routers rtr-239-32-1.example.org;
48 #}
49
50 # A slightly different configuration for an internal subnet.
51 subnet 192.168.12.0 netmask 255.255.255.224 {
52   range 192.168.12.1 192.168.12.10;
53   option domain-name-servers ns1.internal.example.org;
54   option domain-name "stemba.sch.id";
55   option routers 192.168.12.254;
56   option broadcast-address 192.168.12.255;
57   default-lease-time 600;
58   max-lease-time 7200;
59 }
60
61 # Hosts which require special configuration options can be listed in
62 # host statements.  If no address is specified, the address will be
63 # allocated dynamically (if possible), but the host-specific information
64 # will still come from the host declaration.
65
66 #host passacaglia {
67 #   hardware ethernet 0:0:c0:5d:bd:95;
68 #   filename "umunix.passacaglia";
69 #   server-name "toccata.fugue.com";
70 #}
71
dhcpd.conf: 108 lines, 3553 characters.
kelompok12:/etc/dhcp3# /etc/init.d/dhcp3-server restart
```

Gambar 1.10

12. Cek pada computer cliet apakah dhcp sudah bisa dijalankan.

## **Biografi Penulis**



Mega Elinda A. Pernah bersekolah di SMP Negeri 2 Semarang (Mulo) melanjutkan ke SMK Negeri 7 (STM Pembangunan) Semarang. Sekarang sedang melanjutkan study Ahli Madya di Politeknik Negeri Semarang jurusan Teknik Elektro, program studi Teknik Telekomunikasi.